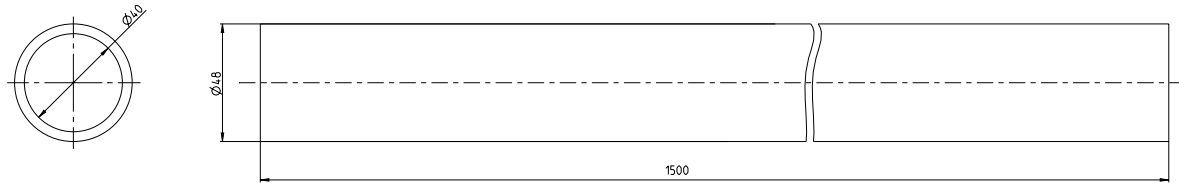


**Type Support tube** Article number 9521249000



**Component pictograms**



**Property chart**

Specification	Value	According to standard	Remark
<b>General data:</b>			
Dimensions (mm)	$\varnothing 48 \times 1500$ mm		
Weight	~ 6,51 kg		
Rated voltage	Max. 400 V (AC) Max. 48 V (DC)		
Temperature range	-5°C bis +70°C		
Largest gland cross-section	$\varnothing 40$ mm		Details see drawing
Material	E235 + C	EN 10305-2	Inner joint leveled
Surface:	Galvanized, (blue passivated)		