

Technical Data

Float Switch

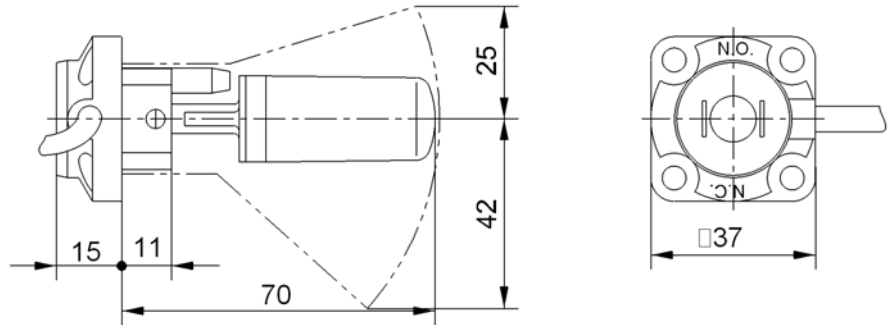
Mini-level float switches

Description **MS-KS-PA-FL36-OS**

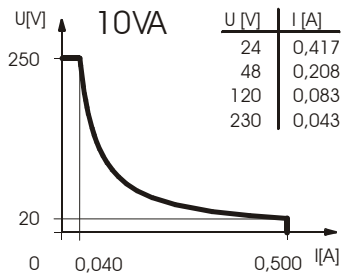
Article number **689170002**

Wiring diagram
(none activated condition)

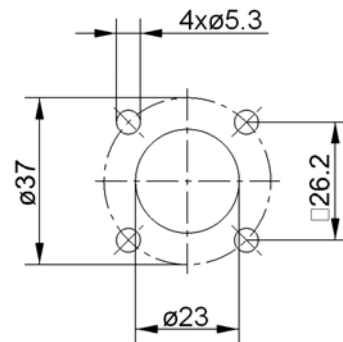
BU BN



Performance diagram
(maximum data)

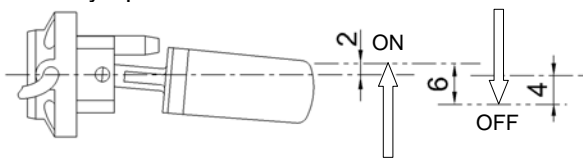


Assembly dimensions

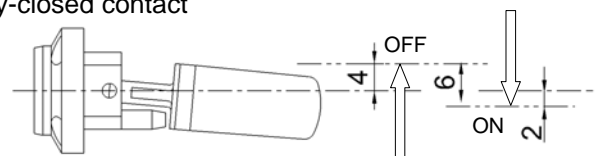


Switching point at density 1 kg / dm³

Normally-open contact



Normally-closed contact



Surface of the fluid: - - - - -

rising level ↑

falling level ↓

This document will not become the contractual basis; the details included herein do not constitute any descriptions of expected conditions, so that warranties/claims for defects on account of possible variations of the actual qualities from the qualities described herein are explicitly excluded. All rights reserved. Specifications subject to change without notice!

Date of issue : 05.01.2012 / Page 1 of 2
Document : 689170002_en.doc / Last update : 1 / 0003-12

Identifying characteristics in accordance with DIN EN 60947-1 and EN 62246-1

Electrical data

max. switching voltage	250 V
max. switching current	0,5 A
max. switching capacity	10 VA
mechanical life	10^7 to 10^9 switches depending on the load
Switching element	1 normally-open contact, falling or rising level The switching function can be changed from N.O. to N.C. by turning the switch up to 180°.
protection class	II, totally insulated

Mechanical data

Enclosure material	PA12
Float material	PA12
Ambient air temperature	-5°C to +60°C
Liquid temperature	-5°C to +60°C
Connection	cabel 2 x 0,34 mm ² x 3 m ± 5 %, PVC
Protection type	IP 65 acc to IEC529 / EN 60529
Max. pressure	5 bar

General details

Repeatability of switching points is $\pm 0,05$ mm based on the same geometrical conditions as of a switch device.

The measures of the switching points refer to a fluid-density of 1 g/cm³.

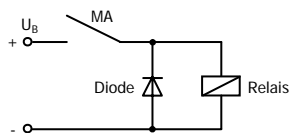
The tolerance of the switching points is ± 2 mm

Maximum data must not be exceeded!

Pay attention to the contact protection, when switching inductive and capacitive loads.

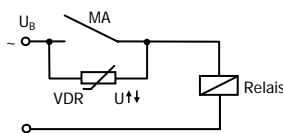
Inductive loads

Direct current

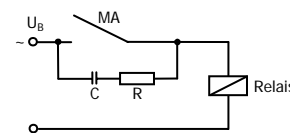


Suppression of voltage peaks with a free-wheeling diode

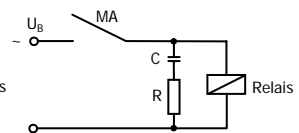
Alternating voltage



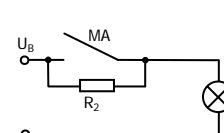
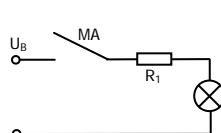
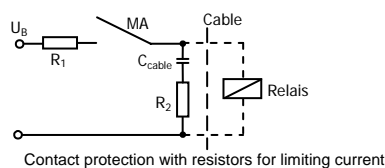
Suppression of voltage peaks with a VDR



Suppression of voltage peaks with an RC element



Capacitive loads and lamp loads



This document will not become the contractual basis; the details included herein do not constitute any descriptions of expected conditions, so that warranties/claims for defects on account of possible variations of the actual qualities from the qualities described herein are explicitly excluded. All rights reserved. Specifications subject to change without notice!

Date of issue : 05.01.2012 / Page 2 of 2
Document : 689170002_en.doc / Last update : 1 / 0003-12