

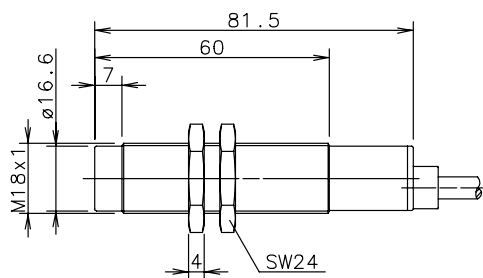
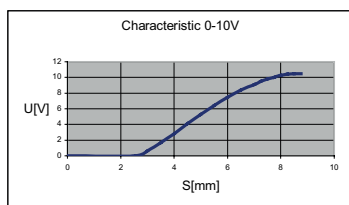
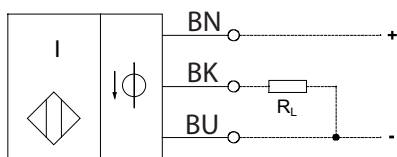
# Inductive Proximity Switch

## Series M18

Description **KIN-M18PA/008-P2**

Article number **6602006141**

### Wiring Diagram



### Electrical data

Range of measurement	S	3-8 mm
Mounting		non flush
Repeat accuracy		≤ 2 % referring to the accumulated value
Linearity error		± 5 % referring to the accumulated value
Temperature error		± 15 % referring to the accumulated value
Rated operational voltage	$U_e$	12-24 V
Operational voltage range	$U_B$	10-36 V; incl. ripple frequency
voltage output		adjustable with potentiometer 0 – 5 kΩ
No-load supply current	$I_0$	≤ 20 mA
False polarity protection		protection against reverse supply polarity
Switching element		permanent overload and s.c.p.
Transient voltage rate		200 V for 1 ms at $R_i = 1 \text{ k}\Omega$

### Mechanical Data

Enclosure	M18 x 1, brass nickel plated
Ambient air temperature	-25 °C ... +70 °C
Type of protection	IP65
Termination type	cable 3 x 0,5 mm <sup>2</sup> x 2 m

### EU Conformity

acc. to directive 2014/30/EU (EMC-Directive)