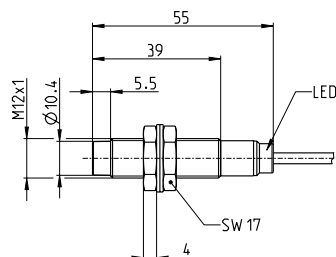
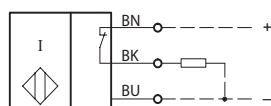


## Inductive Proximity Switch Series M12


Description **KIN-M12PÖ/004-KL2I**

Article number **6532704002**

### Wiring Diagram



### Identifying characteristics in accordance with EN 60947-5-2


Electrical data	
<b>Sensor operation (delivery status)</b>	
Rated operating distance	$S_n$ 4 mm
Standard target	12 mm x 12 mm, t = 1 mm, material: FE360
Real sensing distance	$S_r$ 3,6 ... 4,4 mm
Assured operating distance	$S_a$ 0 ... 3,2 mm
Switching element function	DC, N.C.
Repeat accuracy	R $\leq 5\%$
Differential travel (hysteresis)	H $\approx 8\%$
Rated operational voltage	$U_e$ 12 - 24 V DC
Operational voltage range	$U_B$ 10 - 30 V DC
Rated insulation voltage	$U_i$ 75 V DC
Rated impulse withstand voltage	$U_{imp}$ 500 V
Voltage drop	$U_d$ $\leq 2$ V specification
Utilization category	DC 13
Rated operational current	$I_e$ 200 mA $\pm 10\%$
Minimum operating current	$I_m$ 1 mA
Off-state current	$I_r$ $< 0,1$ mA
No-load supply current	$I_o$ $< 10$ mA
Switching element	permanent overload and s.c.p.
Short-circuit protection	pulsed, current-limited and thermal
Frequency of operating cycles	f 1000 Hz
Mounting	non flush
False polarity protection	yes
Time delay before availability	$t_v$ $< 300$ ms
<b>IO-Link operation</b>	 <b>IO-Link</b>
Rated operating voltage range	$U_B$ 18 - 30 V DC (typ. 24 V DC)
Output	IO-Link
Switching element function	N.O. / N.C. parameterizable
Repeat accuracy	R $\leq 5\%$ from the end value, $U_B$ and temperature at a constant level
No-load supply current	$I_o$ $< 15$ mA
Serial output	Short-circuit proof
False polarity protection	yes

IO-Link specification	
IO-Link Spec V 1.1	compliant (yellow LED)
Speed	COM 2 38,4 kBaud
Process data Device → Master	8 bit
cycle time	10 ms

Mechanical Data	
Front cap	LCP, black
Enclosure	brass, nickel plated
End cap	PA12, transparent
Temperature range	- 20 °C ... + 70 °C (cable not fixed mounted) - 25 °C ... + 70 °C (cable fixed mounted)
Type of protection	IP67 / NEMA Type 1
Function indication	LED, yellow
Degree of pollution	3 (Pollution of the sensing surface may decrease operating distance)
Termination type	Cable 3 x 0,14 mm <sup>2</sup> x 2 m ±5 %, PUR - Outer jacket, black
For attachment	2 x hexagon nut (tightening torque ≤ 10 Nm) and 2 x toothed washer

Product reliability (in acc. with DIN EN 61709 (SN 29500))	
MTTF (at 40 °C)	>1150 years

EU Conformity	
	acc. to directive 2014/30/EU (EMC-Directive)

Approvals	
	

Notes	
To be used with a class 2 power supply according to UL approval.	
Further data and information can be found at <a href="http://www.bernstein.eu">www.bernstein.eu</a> .	