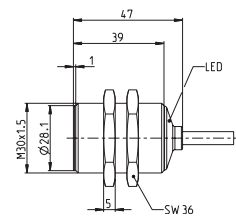
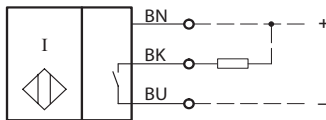


Inductive Proximity Switch Series M30

Description **KIB-M30NS/010-KL2V**

Article number **6532307001**

Wiring Diagram




Identifying characteristics in accordance with EN 60947-5-2

| Electrical data | | |
|----------------------------------|-----------|--|
| Rated operating distance | S_n | 10 mm |
| Standard target | | 30 mm x 30 mm, t = 1 mm, material: FE360 |
| Real sensing distance | S_r | 9 ... 11 mm |
| Assured operating distance | S_a | 0 ... 8,1 mm |
| Switching element function | | DC, N.O. |
| Repeat accuracy | R | ≤ 5 % |
| Differential travel (hysteresis) | H | ≈ 8 % |
| Rated operational voltage | U_e | 12 - 24 V DC |
| Operational voltage range | U_B | 10 - 30 V DC |
| Rated insulation voltage | U_i | 75 V DC |
| Rated impulse withstand voltage | U_{imp} | 500 V |
| Voltage drop | U_d | ≤ 2 V specification |
| Utilization category | | DC 13 |
| Rated operational current | I_e | 200 mA ±10 % |
| Minimum operating current | I_m | 1 mA |
| Off-state current | I_r | < 0,1 mA |
| No-load supply current | I_o | < 10 mA |
| Switching element | | permanent overload and s.c.p. |
| Short-circuit protection | | pulsed, current-limited and thermal |
| Frequency of operating cycles | f | 300 Hz |
| Mounting | | flush |
| False polarity protection | | yes |
| Time delay before availability | t_v | < 300 ms |

| Mechanical Data | |
|---------------------|--|
| Front cap | LCP, black |
| Enclosure | brass, nickel plated |
| End cap | PA12, transparent |
| Temperature range | - 20 °C ... + 70 °C (cable not fixed mounted) - 25 °C ... + 70 °C (cable fixed mounted) |
| Type of protection | IP67 / NEMA Type 1 |
| Function indication | LED, yellow |
| Degree of pollution | 3 (Pollution of the sensing surface may decrease operating distance) |
| Termination type | Cable 3 x 0,34 mm ² x 2 m, PUR - Outer jacket, black |
| For attachment | 2 x hexagon nut (tightening torque ≤ 70 Nm) |

| Product reliability (in acc. with DIN EN 61709 (SN 29500)) | |
|--|-------------|
| MTTF (at 40 °C) | >1150 years |

| EU Conformity | |
|--|--|
| acc. to directive 2014/30/EU (EMC-Directive) | |

| Approvals | |
|---|--|
|  | |

| Notes | |
|---|--|
| To be used with a class 2 power supply according to UL approval. | |
| Further data and information can be found at www.bernstein.eu . | |