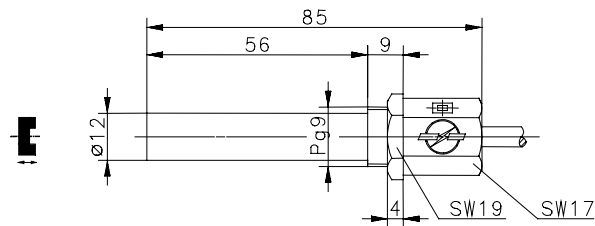
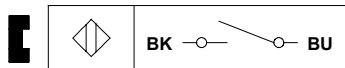


## Magnetic Switch Series MA-26

Description **MAK-2612-L-2**

Article number **6416226286**

### Wiring diagram



### Technical data

Switching function	N.O.	
Reference magnet	T-62 N/S (6301262039)	
Assured operating distance - ON	$S_{ao}$	17 mm
Assured operating distance - OFF	$S_{ar}$	32 mm
Repeat accuracy	R	$\pm 0,1$ mm, under same geometrical conditions at the same temperature
Utilization category	DC-12	
Frequency of operating cycles	f	100 Hz

### Electrical data

Max. voltage	250 V
Max. switching current	1,0 A
Max. switching capacity	60 VA
Protection class acc. to EN 61140	II (totally insulated)
Note	Combinations of switching voltage and switching current must not exceed the maximum switching capacity.

### Mechanical data

Enclosure	PA 6, red
Temperature range	-5 °C ... +70 °C -20 °C ... +70 °C (fixed cable)
Mechanical life	$3 \times 10^8$ operating cycles
Shock	50 g (11 ms / 1/2 Sinewave)
Vibration	35 g (10 - 1000 Hz)
Protection type	IP67 acc. EN 60529
Termination type	Cable 2 x 0,5 mm <sup>2</sup> x 2 m $\pm 5$ %; PVC-outer jacket black
Assembly position	optional (assembly on ferromagnetic material means reduction of switch distance)
Fixing accessories	1 x hexagon nut, brass galvanized

<b>Standards</b>	
	EN 60947-5-1
	EN 62246-1

<b>EU Conformity</b>	
	acc. to directive 2014/35/EU (Low-Voltage-Directive)

<b>Notes</b>	
	Contact protection must be provided for inductive and capacitive loads.