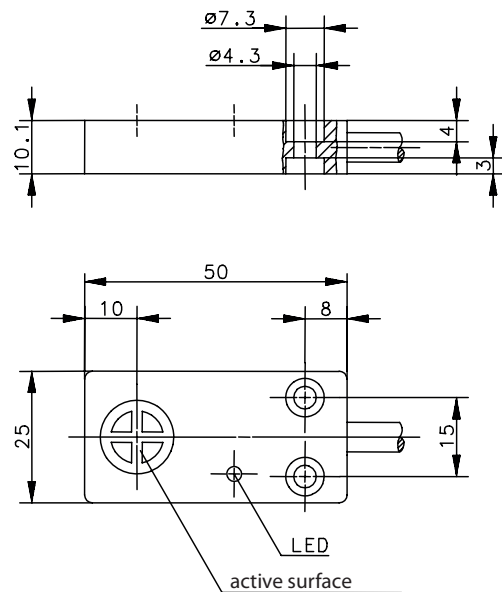
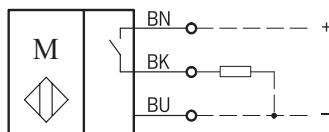


Magnetic Sensor Series E50

Description **MEK-E50PS/H10-KL2**

Article number **6372290081**

Wiring diagram



Technical data

Switching function	PNP, N.O.	
Switching element	Hall (south activated), typ. 10 mT	
Reference magnet	T-62 N/S (6301262039)	
Assured operating distance - ON	S_{ao}	17 mm
Repeat accuracy	R	$\pm 0,1$ mm, under same geometrical conditions at the same temperature
Frequency of operating cycles	f	10 kHz
Short-circuit protection	pulsed	
False polarity protection	yes	

Electrical Data

Operational voltage range	U_b	10 - 39 V DC
Switching current	400 mA	
Supply current	< 20 mA	
Voltage drop	U_d	< 3 V
Protection class acc. to EN 61558	III (safety extra-low voltage)	

Mechanical data	
Enclosure	PBT
Ambient air temperature	- 5 °C ... + 70 °C (cable not fixed mounted) - 25 °C ... + 70 °C (cable fixed mounted)
Type of protection	IP67 acc. to EN 60529
Indication	LED yellow, indicates actuated status
Termination type	Cable 3 x 0,5 mm ² x 2 m ± 5 %; PVC-Outer jacket, black
Assembly position	optional (assembly on ferromagnetic material means reduction of switch distance)

Standards	
	DIN EN 60947-5-2

EU Conformity	
	acc. to directive 2014/30/EU (EMC-Directive)