

Technical Data

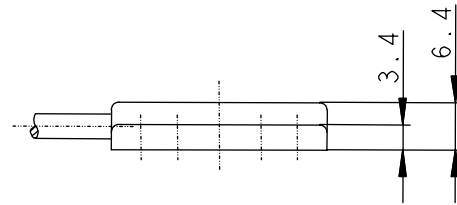
Magnetic switches

Series MA-11

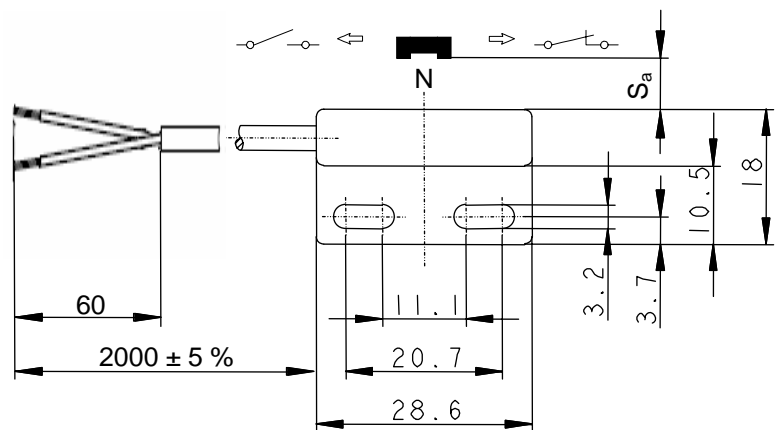
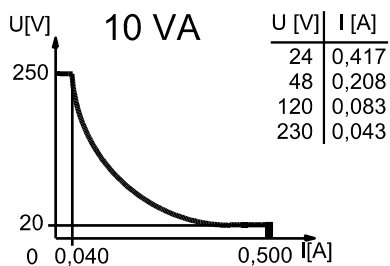
Type designation **MAK-1114-B-2**

Item number **6311411624**

Wiring diagram



Switching diagram



Electrical data

Assured operating distance	S_a	30 mm
Output		bistable
Reed contact:		
max. voltage		250 V
max. switch current		0,5 A
max. switching		10 VA
mechanical lifetime		3×10^8 switchings, however, according to the load resetability
Repeat accuracy	R	$\pm 0,1$ mm under same geometrical conditions
Reference magnet		at the same temperature Customer magnet

Mechanical data

Housing	PA6.6, black; encapsulated reed contact
Ambient air temperature	-5 °C ... +70 °C
Type of protection	IP67 according to IEC 529, EN 60529
Connection	Cable, 2 x 0,14 mm ² ; PVC-Outer jacket, black
Assembly position	optional

Notice

Magnetic fields, bigger than those of the reference magnet, generate a not defined and permanent change of the switching performance. Do not stock, transport or operate the magnetic switch in an environment of magnetic fields bigger than those of the reference magnet!

This document will not become the contractual basis; the details included herein do not constitute any descriptions of expected conditions, so that warranties/claims for defects on account of possible variations of the actual from the here described condition are excluded. Subject to modifications and amendments.

Date of issue: 20.10.2009 / Page 1 of 1
Document: 6311411624_en.doc / Last update: 1 / 0442-09