

Technical Data

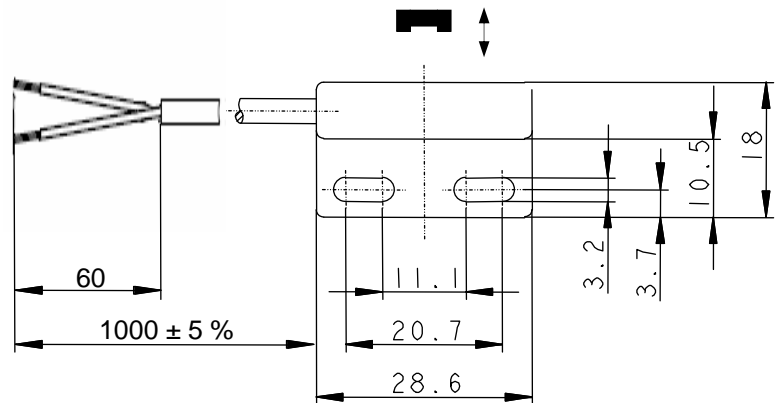
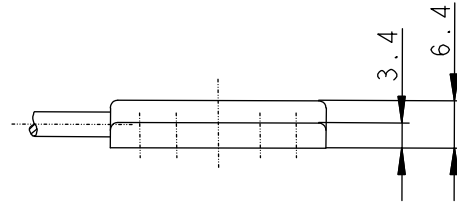
Magnetic switch

Series MA-11

Type designation **MAK-1112-1**

Item number **6310211667**

Wiring diagram



Identifying characteristics in accordance with EN 60947-5-1 and EN 62246-1

Electrical data

Assured operating distance	S_a	10 mm
Switching element function		N.O.
Reed contact:		
max. switching voltage		250 V
max. switching current		1 A
max. switching capacity		100 VA
mechanical lifetime		3×10^8 switchings, however, according to load resetability
Repeat accuracy	R	$\pm 0,1$ mm
Max. Release point		under same geometrical conditions at the same temperature
Max. Release point		22 mm
Shock		50 g (11 ms, $\frac{1}{2}$ Sinus wave)
Vibration		20 g (10 – 2000 Hz)
Corresponding magnet		TK-11-11

Mechanical data

Enclosure	PA 6.6, black; encapsulated reed contact
Ambient air temperature	-5 °C ... +70 °C
Type of protection	IP67 (NEMA 4) according to IEC 529, EN 60529
Termination type	cable 2 x 0,14 mm ² ; PVC -outer jacket black;
Assembly position	optional (assembly on iron means reduction of switch distance)

EU Conformity

acc. to Directive 2006 / 95 / EC

This document will not become the contractual basis; the details included herein do not constitute any descriptions of expected conditions, so that warranties/claims for defects on account of possible variations of the actual from the here described condition are excluded. Subject to modifications and amendments.

Date of issue: 23.08.2012 / Page 1 of 1
Document: 6310211667_en.doc / 0310-12