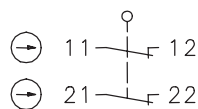


## Plastic bodied limit switch Series TI2

Description **TI2-A2Z STW**

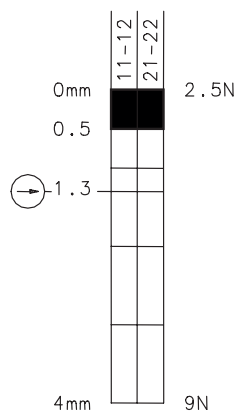
Article number **6188806024**

### Operating symbol



Fixed positioning with  
e.g. fixing screw M5  
according to the standard  
DIN EN ISO 4762.

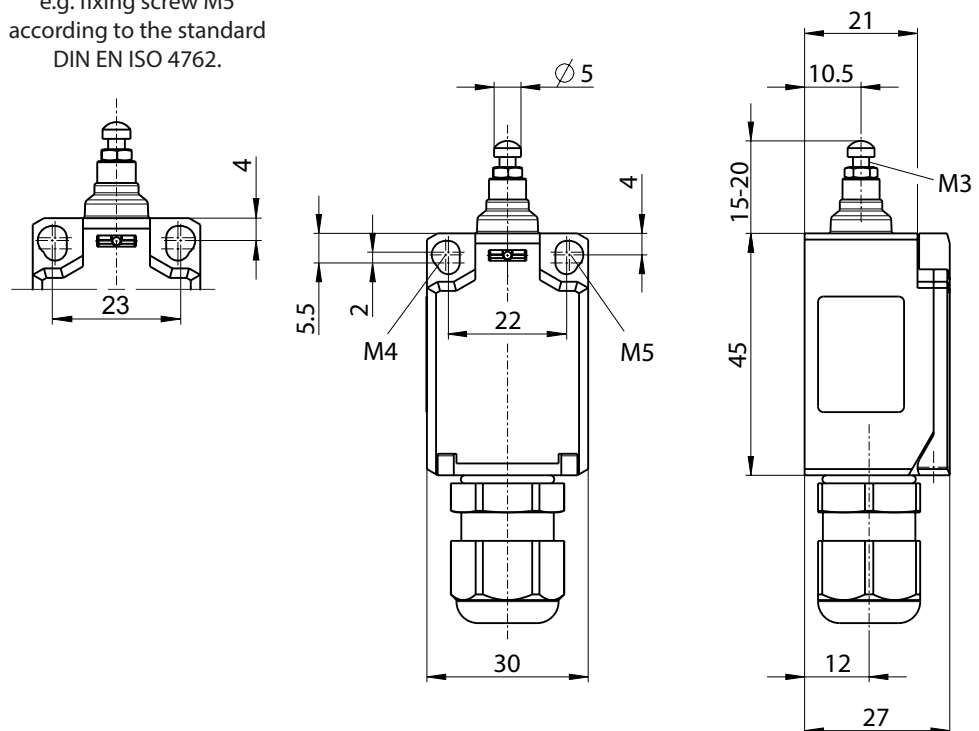
### Operating diagram





On

Off

Tolerance:  
Operating point  $\pm 0,25$  mm;  
Operating force  $\pm 10$  %



### Electrical Data

Rated insulation voltage	$U_i$	250 V AC
Conv. thermal current	$I_{the}$	10 A
Utilization category		AC-15, A300 240V/3A, 120V/6A DC 13, Q300 250V/0.27A, 125V/0.55A
Direct opening action		acc. to IEC/EN 60947-5-1, Annex K
Short-circuit protective device		Fuse 6 A gG
Protection class		II

Mechanical data	
Enclosure	PBT, glass fibre reinforced
Cover	PA 6.6, black
Actuator	Threaded plunger (adjustable M3 with locknut)
Ambient air temperature	-30 °C ... +80 °C
Contact type	2 NC (Zb)
Mechanical life	3 x 10 <sup>6</sup> operating cycles
Switching frequency	≤ 100 / min.
Assembly	2 x M4 or 2 x M5 fixed positioning for safety applications
Connection	4 screw connections (M3,5)
Conductor cross-sections	Solid: 0,5 ... 1,5 mm <sup>2</sup> or Litz wire with ferrules: 0,5 ... 1,5 mm <sup>2</sup>
Cable entrance	1 x tight cable gland M16 x 1.5 (tightness range 2-7mm)
Weight	≈ 0,05 kg
Protection type	IP65 acc. to EN 60529; DIN VDE 0470 T1

Actuation	
The push bolt actuator is mainly intended to be actuated along its axis. Side actuation will considerably reduce switch life.	

ID for safety engineering	
B10d	6 x 10 <sup>6</sup> cycles

Standards	
DIN EN 60947-5-1	

EU Conformity	
acc. to directive 2014/35/EU (Low-Voltage-Directive)	

Approvals	
cUL <sub>US</sub>	A300, Q300
cCSA <sub>US</sub>	A300, Q300 (same polarity)

Notes	
<p>The sliding points must be oiled slightly from time to time.</p> <p>The degree of protection (IP code) specified applies solely to a properly closed cover and the use of an equivalent cable gland with adequate cable.</p> <p>ID-no: 362 461</p>	