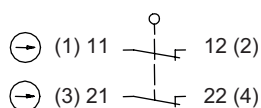


Plastic bodied limit switch Series TI2

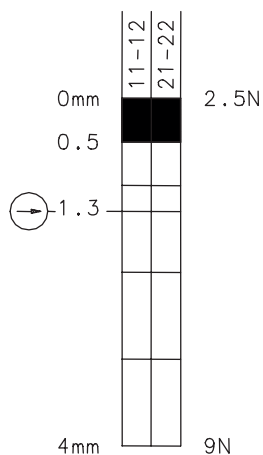
Description **TI2-A2Z W M12**



Article number **6188803067**

Operating symbol

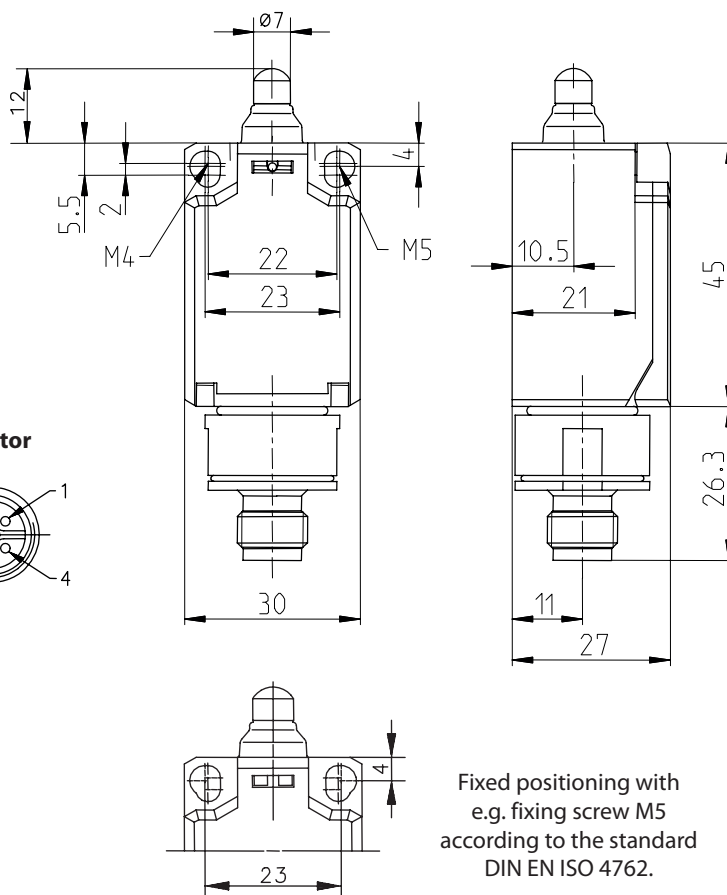
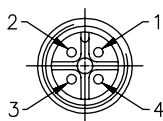


Operating diagram




 On
  Off
 Tolerance:
 Operating point $\pm 0,25$ mm;
 Operating force ± 10 %

Connector



Fixed positioning with
 e.g. fixing screw M5
 according to the standard
 DIN EN ISO 4762.

Electrical Data

Rated insulation voltage	U_i	250 V AC
Conv. thermal current	I_{the}	4 A AC; 2,5 A DC
Rated operational voltage	U_e	240 V AC; 250 V DC
Utilization category		AC-15, U_e/I_e 240 V / 3 A; DC-13, U_e/I_e 250 V / 0,27 A
Direct opening action		acc. to IEC/EN 60947-5-1, Annex K
Short-circuit protective device		Fuse 2 A gG
Protection class		II, totally insulated

Mechanical data	
Enclosure	PBT, glass fibre reinforced (UL 94-V0)
Cover	PA6.6, black (UL 94-V0)
Actuator	Push bolt (thermoplastic)
Ambient air temperature	-30 °C ... +80 °C
Contact type	2 NC (Zb)
Mechanical life	3 x 10 ⁶ operating cycles
Switching frequency	≤ 100 / min.
Assembly	2 x M4
Connection	Connector M12 x 1, A-coded
Weight	≈ 0,05 kg
Installation position	operator definable
Protection type	IP65 acc. to EN 60529; DIN VDE 0470 T1

Actuation	
The push bolt actuator is mainly intended to be actuated along its axis. Side actuation will considerably reduce switch life.	

ID for safety engineering	
B10d	6 x 10 ⁶ cycles

Standards	
	VDE 0660 T100, DIN EN 60947-1, IEC 60947-1
	VDE 0660 T200, DIN EN 60947-5-1, IEC 60947-5-1
	DIN EN ISO 13849-1

EU Conformity	
	acc. to directive 2014/35/EU (Low-Voltage-Directive)

Approvals	
	cCSA _{US} A300, Q300 (same polarity)

Notes	
<p>The degree of protection specified (IP code) applies only to a properly closed cover and the use of an equivalent connector.</p> <p>The connector and the cable (fix or flexible mounted) must at least be suitable for the described ambient air temperatures.</p> <p>The connector must not be connected or disconnected when voltage is applied.</p> <p>The mechanical life of the connector is 500 connection cycles.</p> <p>Suitable connector and cable must be used to meet approval requirements.</p>	