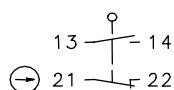


## Plastic bodied limit switch Series BI2

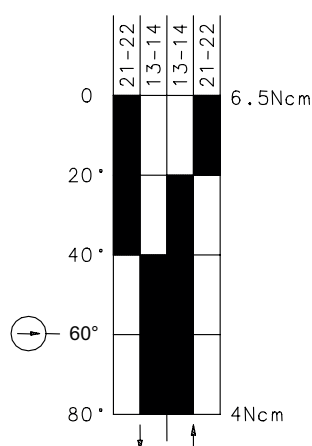
Description **BI2-SU1Z AH 270GR**

Article number **6185185112**

### Operating symbol

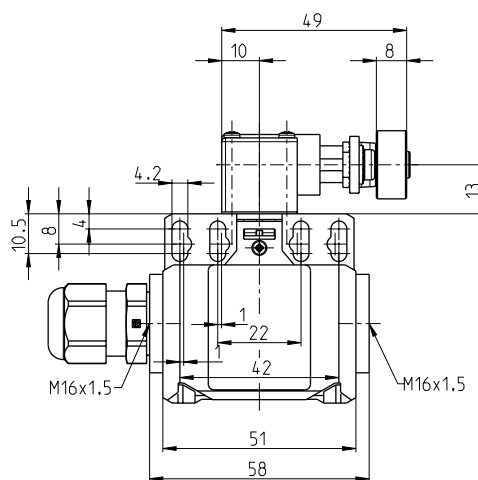
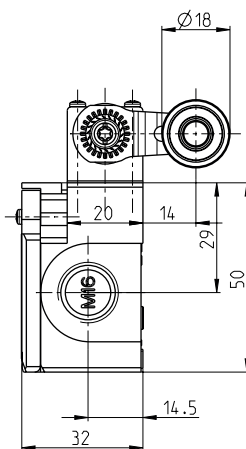


### Operating diagram

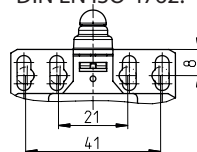


 On  
 Off


Tolerance:  
Operating Point  $\pm 3,5^\circ$ ;  
Operating force  $\pm 10\%$



Fixed positioning with  
e.g. fixing screw M5  
according to the standard  
DIN EN ISO 4762.



### Electrical Data

Rated insulation voltage	$U_i$	400 V AC
Conv. thermal current	$I_{the}$	10 A
Rated operational voltage	$U_e$	240 V AC
Utilization category		AC-15 $U_e/I_e$ 240 V / 3 A DC-13 $U_e/I_e$ 24 V / 3 A
Direct opening action		acc. to IEC/EN 60947-5-1, annex K
Short-circuit protective device		Fuse 2 A gG
Protection class		II, totally insulated

<b>Mechanical data</b>	
Enclosure	Thermoplastic, glass fibre reinforced
Cover	Thermoplastic, glass fibre reinforced, with Cover screw
Actuator	Lever arm housing, roller (thermoplastic)
Ambient air temperature	-30° C ... +80° C
Contact type	1 NC, 1 NO (Zb)
Mechanical life	10 x 10 <sup>6</sup> operating cycles
Switching frequency	≤ 100 / min.
Assembly	2 x M4 / 2 x M5 / 2 x M3 front mounting
Connection	4 screw connections (M3,5)
Conductor cross-sections	0,5 ... 1,5 mm <sup>2</sup> (solid or stranded wire with ferrules)
Cable entrance	2 x M16 x 1,5 (1 x with cable gland, clamping range 4 mm - 8 mm)
Weight	≈ 0,16 kg
Installation position	operator definable
Protection type	IP65 acc. to IEC/EN 60529

<b>ID for safety engineering</b>	
B10d	20 x 10 <sup>6</sup> cycles

<b>Actuation</b>	
<p>The actuating device is preferably started from 2 sides.          By loosening the 4 screws the actuation assembly can be rotated in 90 degree increments such that 8 actuation directions are possible.          The actuation assembly is to be again fastened to the housing using the 4 screws.</p>	

<b>Standards</b>	
	DIN EN 60947-5-1
	DIN EN ISO 13849-1

<b>EU Conformity</b>	
	acc. to directive 2014/35/EU (Low-Voltage-Directive)

<b>Approvals</b>	
	<sub>C</sub> CSA <sub>US</sub> A300, Q300
	CCC

<b>Notes</b>	
<p>The specified protection classification (IP code) applies only when the cover is closed and the appropriate cable is used, in accordance with the clamping range of the above mentioned cable gland.</p>	