

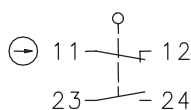
Plastic bodied limit switch

Series IN73

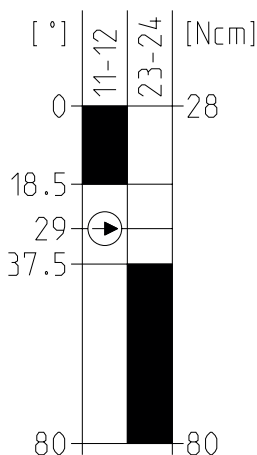
Description **IN73-11 AH 00 11**

Article number **6181000045**

Operating symbol



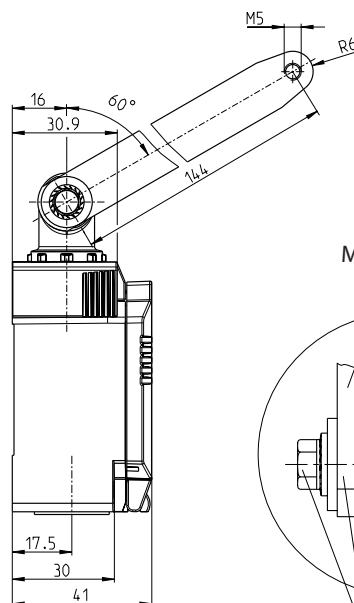
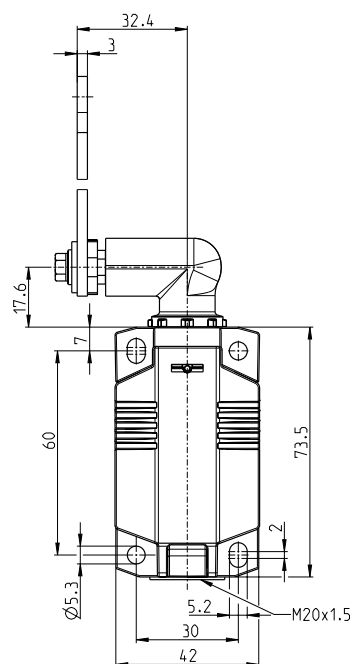
Operating diagram



ON

OFF

Tolerance:
Operating point $\pm 4,5^\circ$
Direct opening action $+ 4,5^\circ$
Operating torque $\pm 30\%$





Mount lever here

To tighten the thread-forming screw, counterhold with lever.

Tightening torque: 250 ± 10 Ncm.

Electrical Data

Rated insulation voltage	U_i	400 V
Rated impulse withstand voltage	U_{imp}	4 kV
Rated operational voltage	U_e	240 V _{AC} / 24 V _{DC}
Rated supply frequency AC		50 / 60 Hz
Overvoltage category		II acc. EN 60947-1 annex H table H1
Conv. thermal current	I_{the}	5 A
Minimum current		1 mA
Utilization category		AC 15, U_e/I_e 240 V / 3 A; DC 13, U_e/I_e 24 V / 1,5 A
Direct opening action		acc. IEC/EN 60947-5-1, annex K; direct opening torque: 60 Ncm
Short-circuit protective device		Fuse 4 A gG
Rated conditional short-circuit current		400 A
Protection class		II

Mechanical data		
Enclosure		Thermoplastic, glass fibre reinforced (UL 94-V0)
Cover		Thermoplastic, glass fibre reinforced (UL 94-V0)
Actuator		Metal lever / lever in 15 ° increments adjustable
Operating temperature		-30 °C ... +75 °C
Storage temperature		-40 °C ... +80 °C
Protection type		IP66 / IP67 acc. EN 60529, Type 4X – Indoor Use only
Pollution degree (built-in switch)		3
Contact material		silver
Device Class (built-in switch)		Category E (MC3+CC2+SC1) acc. EN 60947-1 annex Q
Contact type		1 N.C. (Form Zb), 1 N.O.
Bounce duration	ms	< 3 ms
Switchover time	ms	< 8 ms
Switching frequency		≤ 30 / min.
Mechanical life		100.000 switching cycles
Mission time		≤ 20 years
Connection		4 screw connections (M3)
Conductor cross-sections		0,34 mm ² - 1,5 mm ² ; AWG 22-16 (solid or stranded wire with ferrules)
Cable entrance		1 x M20 x1,5
Weight		≈ 0,25 kg
Installation position		operator definable

Actuation	
<p>The actuating device is preferably started from 2 sides. By lifting the clamp the actuation assembly can be rotated in 45° increments such that 16 actuation directions are possible. The actuation assembly is to be again fastened to the housing by lowering the clamp.</p>	

ID for safety engineering (electrical and mechanical)	
B10d Opening error (NC)	≤ 2 x 10 ⁵ cycles (@ DC-13; 24 V; I _{e2} = 0,1 A)
B10d Closing error (NO)	≤ 2 x 10 ⁵ cycles (@ DC-13; 24 V; I _{e2} = 0,1 A)

Standards	
	DIN EN 60947-5-1
	UL 508 / CSA C22.2 No.14
	DIN EN ISO 13849-1
	DIN EN ISO 13849-2

EU Conformity	
	acc. to directive 2014/35/EU (Low-Voltage-Directive)

Approvals	
	CCC
	cUL _{US}

Notes	
<p>The degree of protection (IP code) specified applies solely to a property closed cover and the use of an equivalent cable gland with adequate cable.</p> <p>The lever is loosely attached and must be adjusted and tightened.</p>	