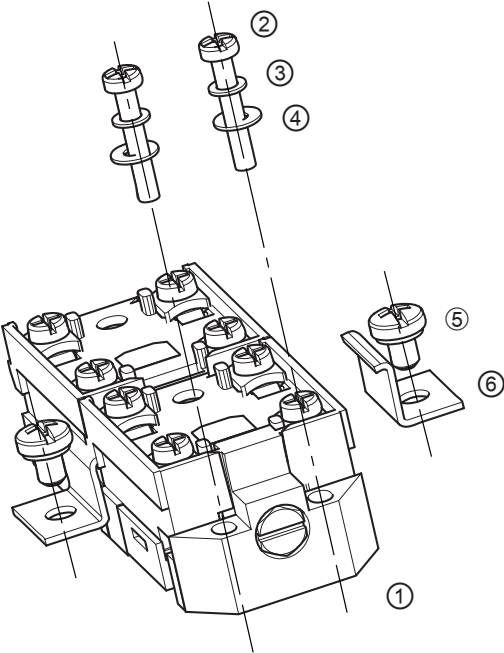


Plastic bodied limit switch - Set
Series C74

Type designation C74-EB-U2ZD SET	Article number 3996000280
---	----------------------------------



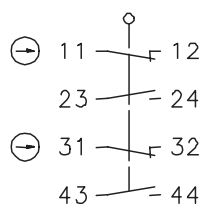
Components		Quantity	
①	Built-in switch	1	(see page 2-3)
②	Fixing screw, long	2	
③	Lock washer	2	
④	Washer	2	
⑤	Fixing screw, short	2	
⑥	Holder plate	2	

Plastic bodied limit switch - Set Series C74

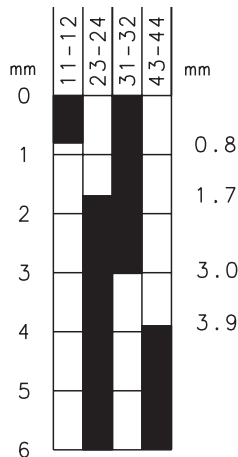
Type designation **C74-EB-U2ZD SET**



Article number **3996000280**

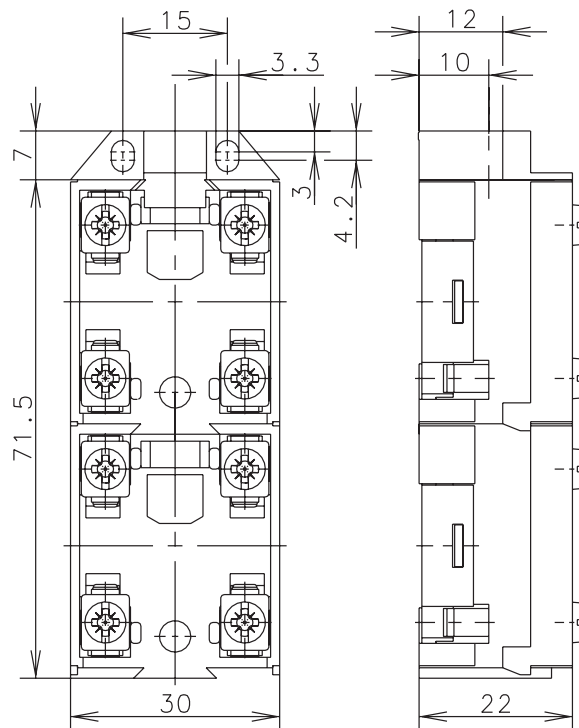
Operating symbol




Operating diagram



  Tolerance:
 On Off Operating point $\pm 0,25$ mm;
 Actuating force: ± 10 %



Electrical Data

Rated insulation voltage	U_i	400 V AC
Conv. thermal current	I_{the}	10 A
Rated operational voltage	U_e	240 V AC
Utilization category		AC-15, U_e / I_e 240 V/ 3 A
Positive opening NC contact		acc. IEC/EN 60947-5-1, annex K
Short-circuit protective device		Fuse 10 A gG

Mechanical data	
Enclosure	Thermoplastic, glass fibre reinforced
Actuator	Plunger inside located, Ø 8
Ambient air temperature	-30 °C ... +80 °C
Contact type	2 NC, 2 NO (Zb)
Mechanical life	10 x 10 ⁶ switching cycles
Switching frequency	≤ 100/min
Assembly	2 x M3
Connection	8 screw connections (M3,5)
Conductor cross-sections	0,5 – 1,5 mm ² (solid or stranded wire with ferrules)
Weight	≈ 0,06 kg
Installation position	Operator definable
Protection type	IP00 acc. to EN 60529; DIN VDE 0470 T1

Actuation
Actuating the device is possible only in direction of the plunger.

ID for safety engineering
B10d 20 x 10 ⁶ cycles

Standards
DIN EN 60947-5-1
DIN EN ISO 13849-1

EU Conformity
acc. to directive 2014/35/EU (Low-Voltage-Directive)

Approvals
CCC

Notes
Because of the open construction of the device there is no special protection against ingressing of water and touching parts under voltage.