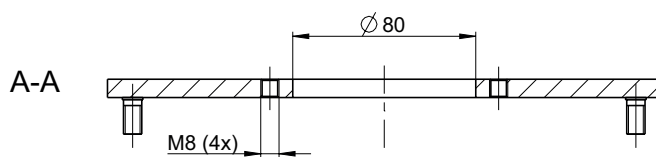
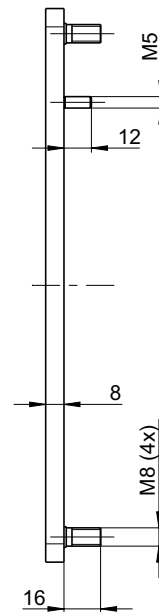
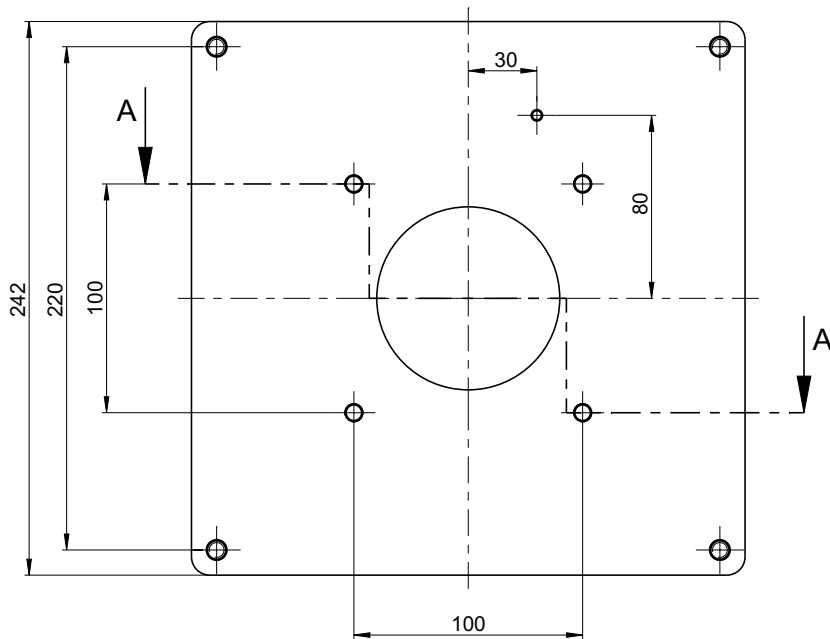
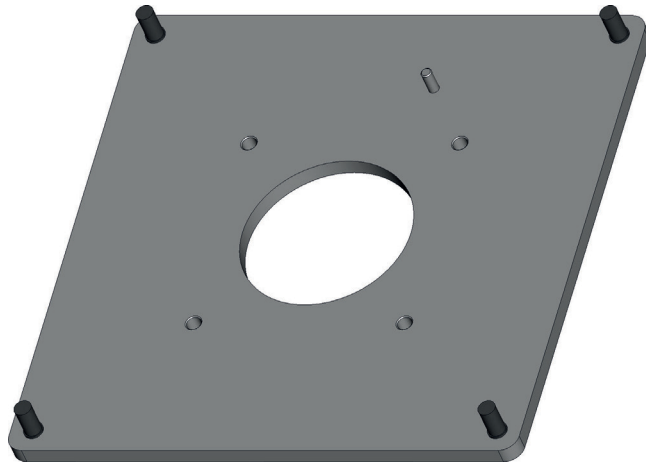
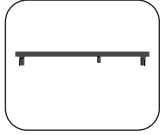


Type FLEX.BASE Adapter plate

Article number 9806000101



## Component pictograms



FLEX.BASE Adapter plate  
 Art.-Nr.:9806000101  
 RAL 9006

Property chart			
Specification	Value	According to standard	Remark
<b>General data:</b>			
Dimensions (mm)	242 x 242 x 24 mm		
Weight	~ 3,6 kg		
Rated voltage	Max. 400 V (AC) Max. 48 V (DC)		
Protection class	I	EN 61140 / VDE 0140-1	Protection by protective conductor
Temperature range	-5°C bis +70°C		
Hole pattern	100 x100 mm		
Gland cross-section	ø 80 mm		
Material	1.0037		
Surface:	powder-coated (Standard = RAL 9006)		
Consistent with:	CS-3000NEXT Base CS-3000 Base CS-480 B.flex Base		