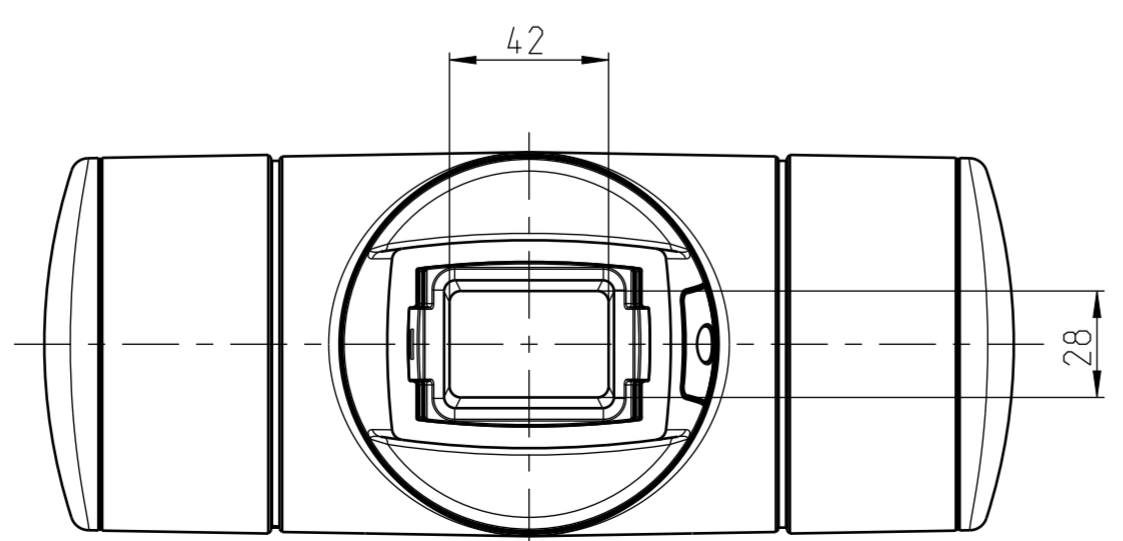
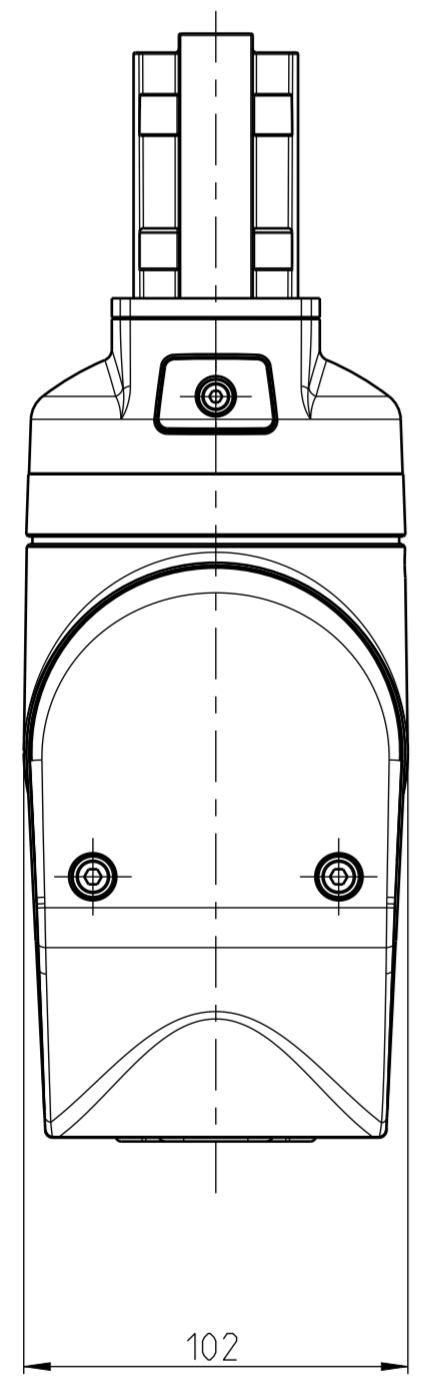
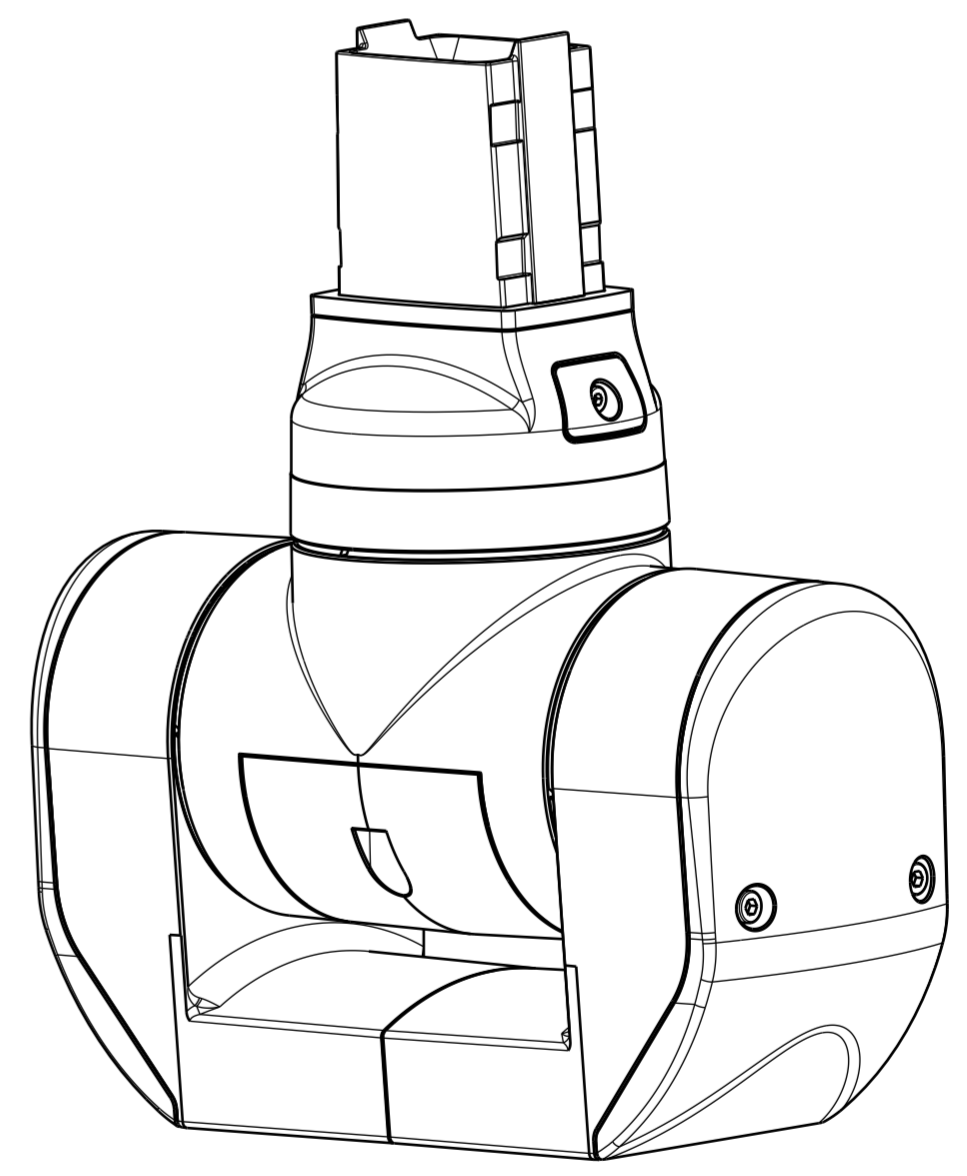
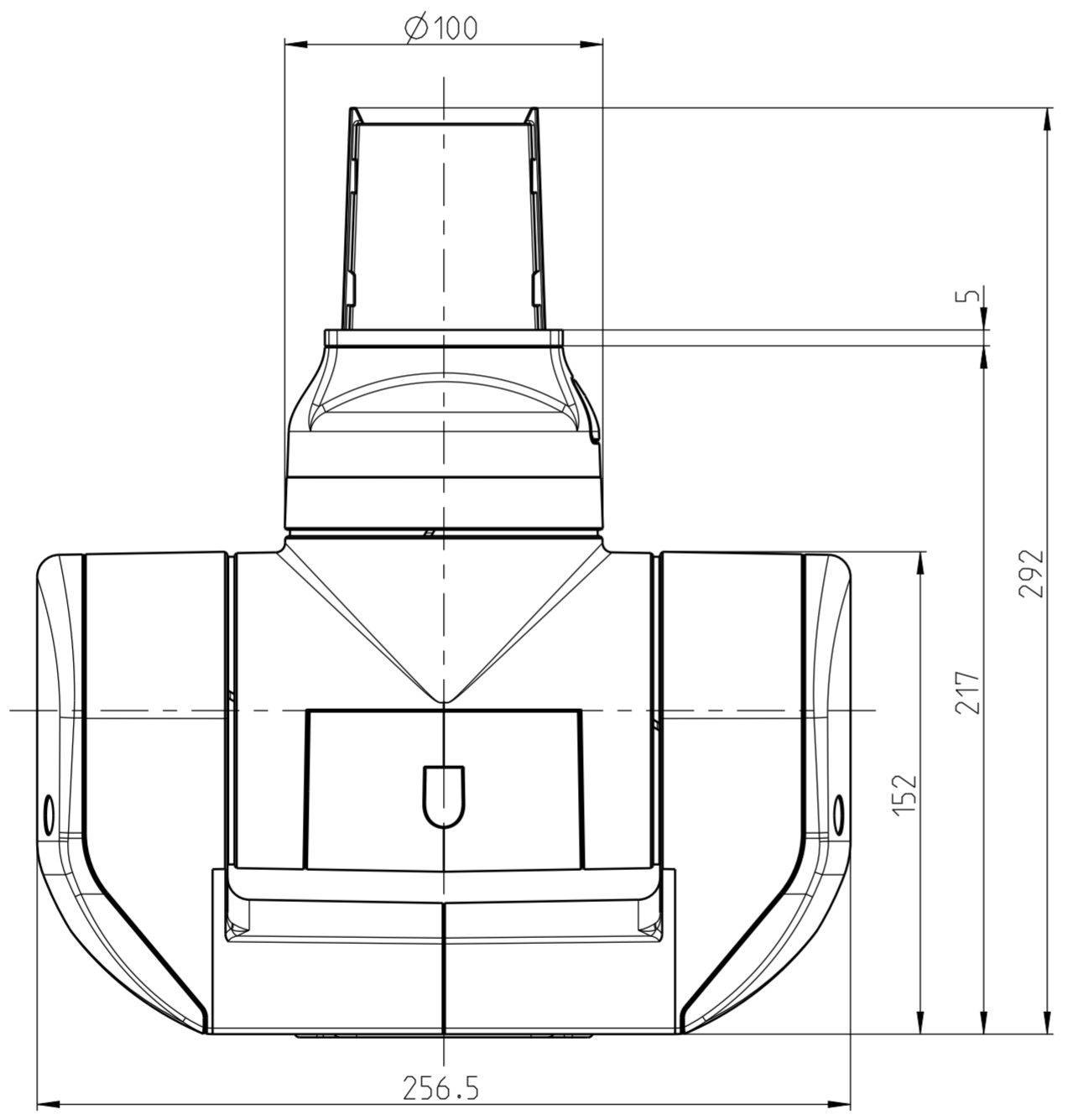
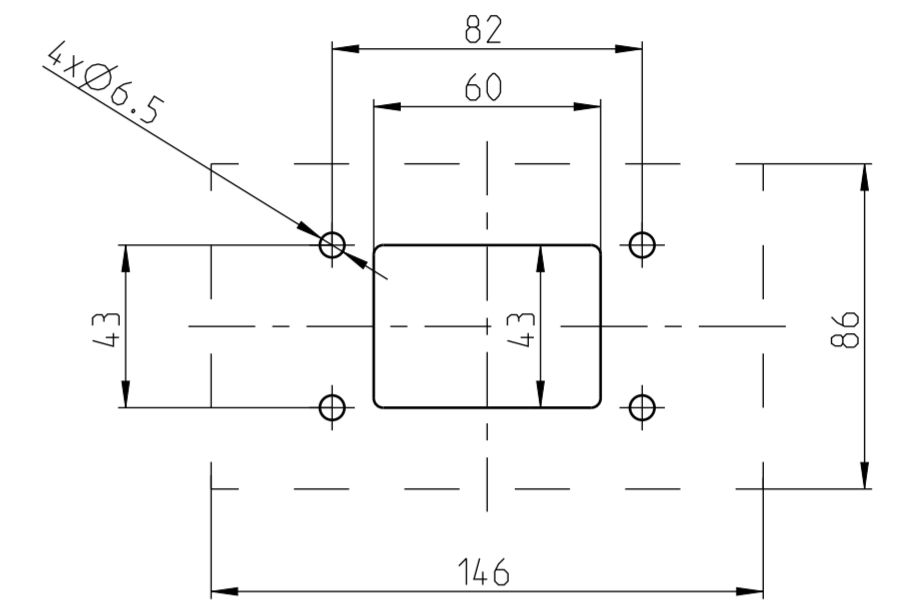


Bearbeitung der Montagefläche /  
Machining of the mounting area



Mittellingsnummer/Notice number		<b>BERNSTEIN</b> Bernstein AG Postfach 1164 D-32437 Porta Westfalica www.bernstein.eu	Masse ohne Toleranzangabe/General tolerances	
Entwicklungsnummer/Development number			ISO 2768-mH	
Umgearbeitet aus/Manufactured out of		Erstellt/Drawn by		Halbzeug/Semifinished part
Passend zu/Matched with		10.10.2018 M.Fehring		Oberfläche/Surface
-		10.10.2018 F.Schöber		RAL9006 / RAL7016
Mst./Scale		Freigegeben/Approved by		Werkstoff/Material
1:2		10.10.2018 M.Fehring		Gewicht ca./Weight approx.:
A2				Blatt/Sheet
				1
Benennung/Part Name			Nummer/ Drawing No.	Modell/ Model
CS-3000neXt Dreheigungskupplung			1017300072	1
CS-3000neXt turn/tilt coupling			1017300073	2