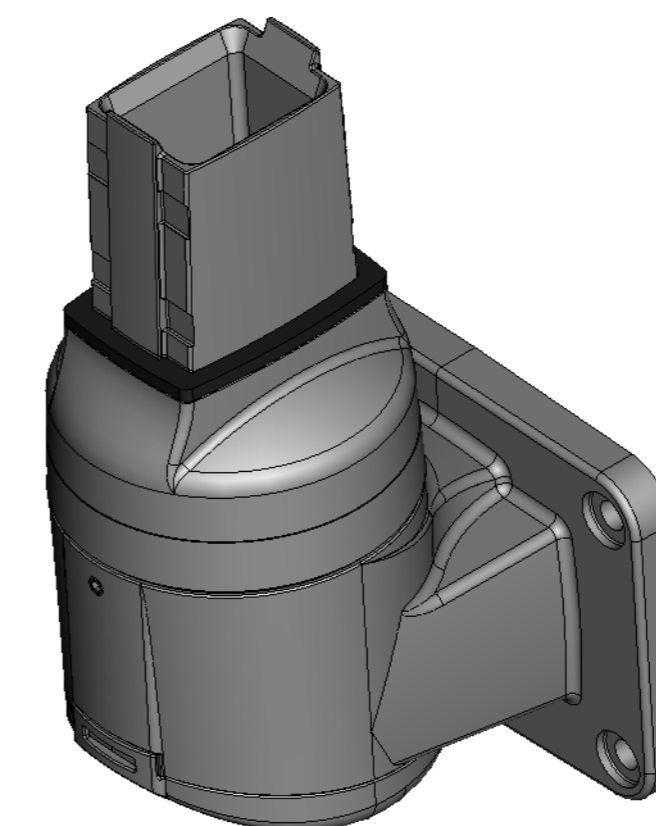
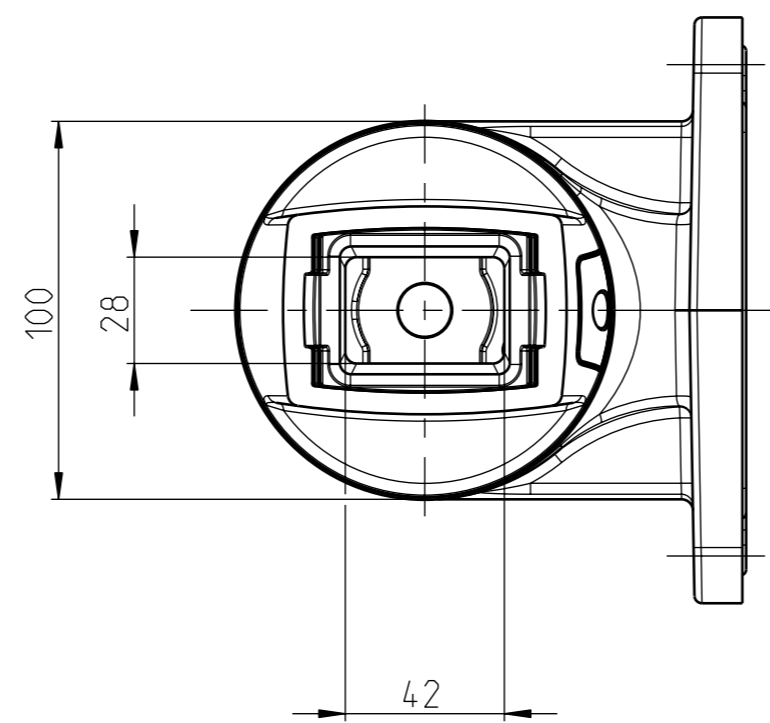
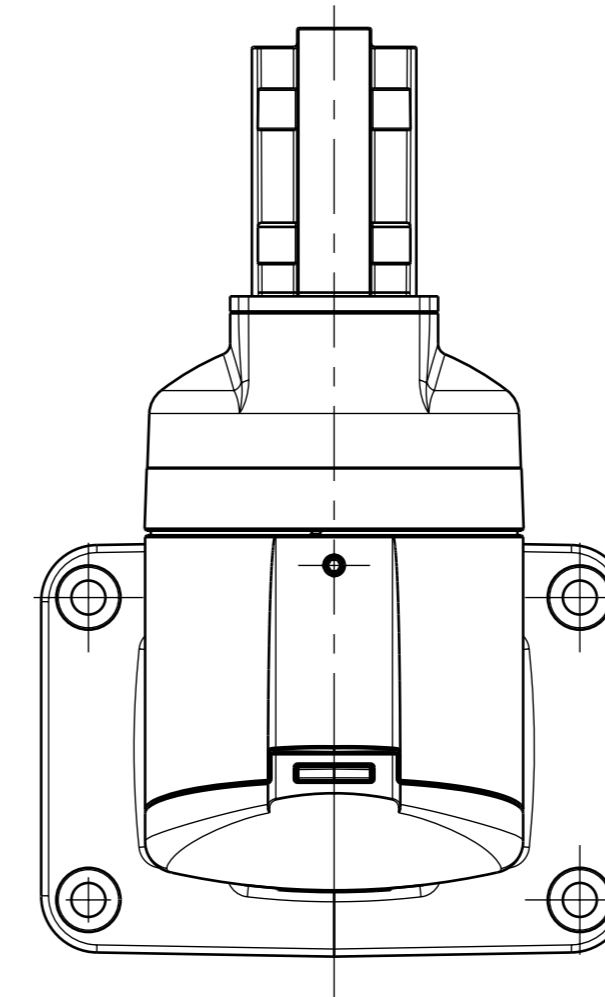
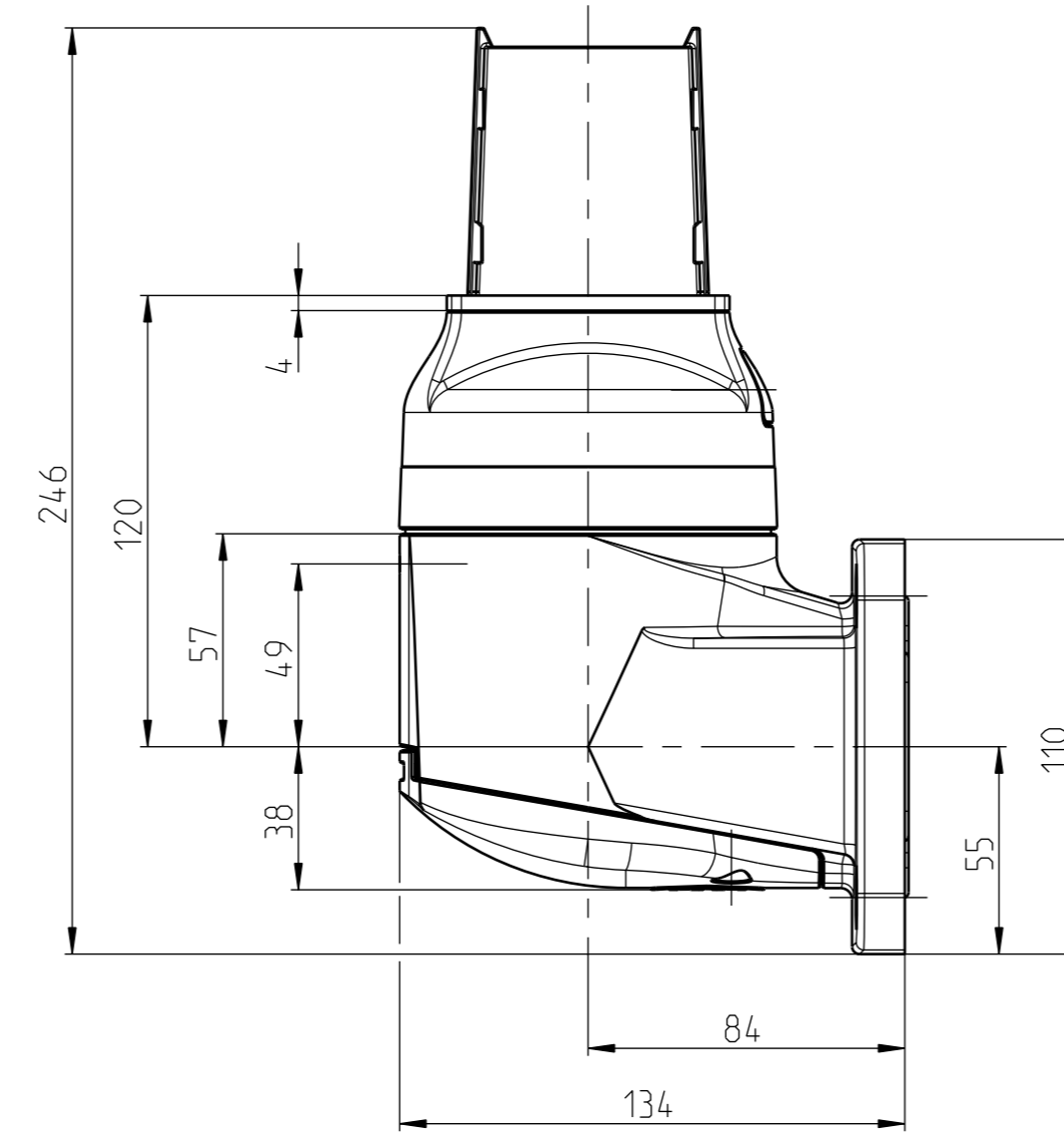
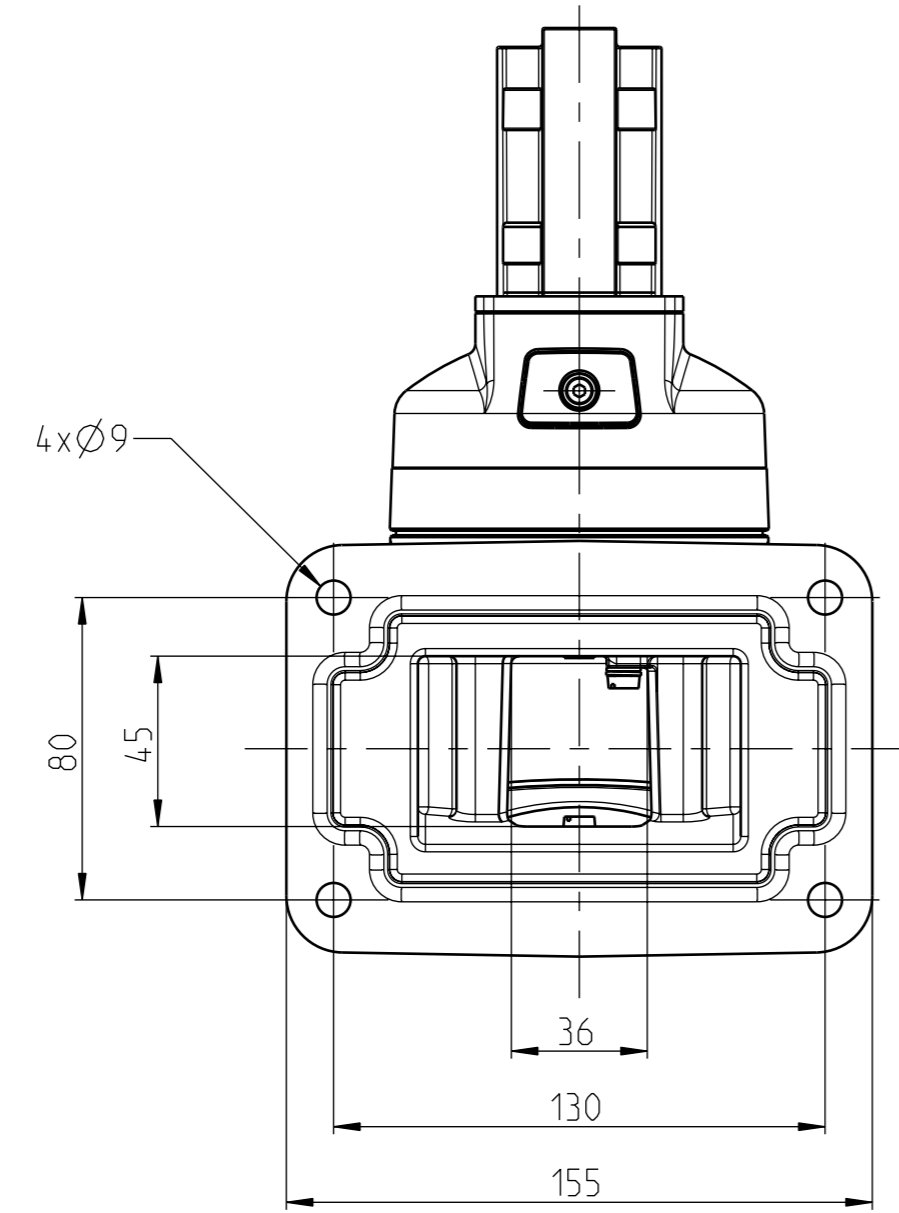


Bearbeitungszeichnung für Montagefläche



|                                       |   |  |
|---------------------------------------|---|--|
| Mitteilungsnummer/Notice number       | <b>BERNSTEIN</b>  | Masse ohne Toleranzangabe/General tolerances |
| Entwicklungsnummer/Development number | Bernstein AG<br>Postfach 1164<br>D-30437 Herda Westfalica<br>www.bernstein.eu | ISO 2768-mH                                  |
| Umgearbeitet aus/Manufactured out of  | Erstellt/Drawn by<br>10.09.2014 F.Schöber                                     | Halbzeug/Semi-finished part                  |
| Passend zu/Matched with               | Geprüft/Checked by<br>10.10.2014 S.Hoppe                                      | Oberfläche/Surface                           |
| Mst./Scale                            | Freigegeben/Approved by<br>13.10.2014 F.Schöber                               | Werkstoff/Material                           |
| 1:2                                   | A1  | Gewicht ca./Weight approx.:<br>2.49275 kg    |
| Benennung/<br>Part Name               | CS-3000neX1 Wandgelenk S<br>CS-3000neX1 wall joint S                          | Blatt/Sheet<br>3 / 3                         |
|                                       | Nummer/<br>Model  | Zeichnung/<br>Drawing                        |
|                                       | 1017300011 KD   | 1 1  |