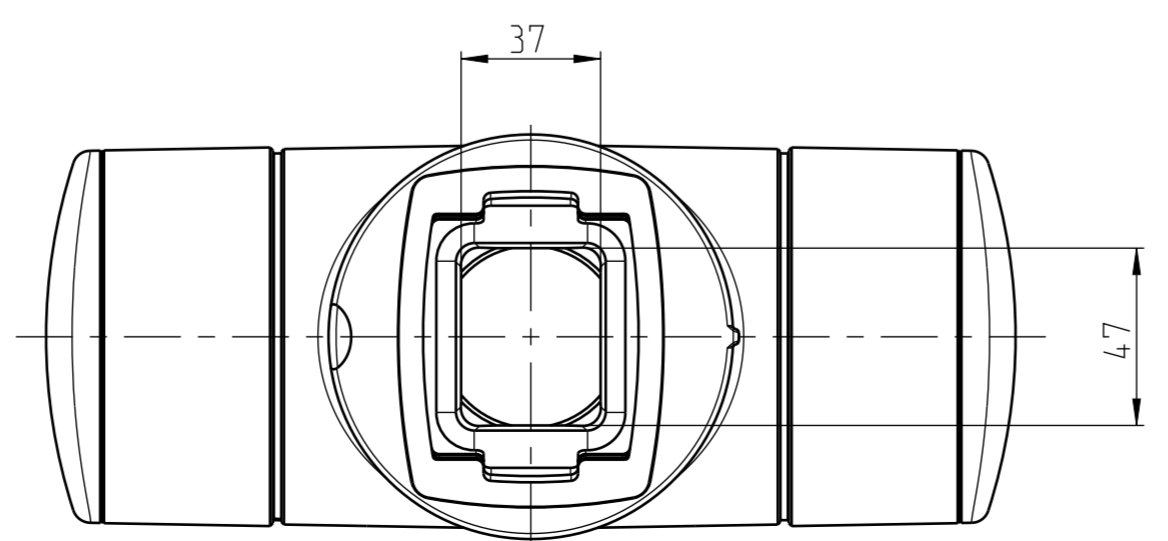
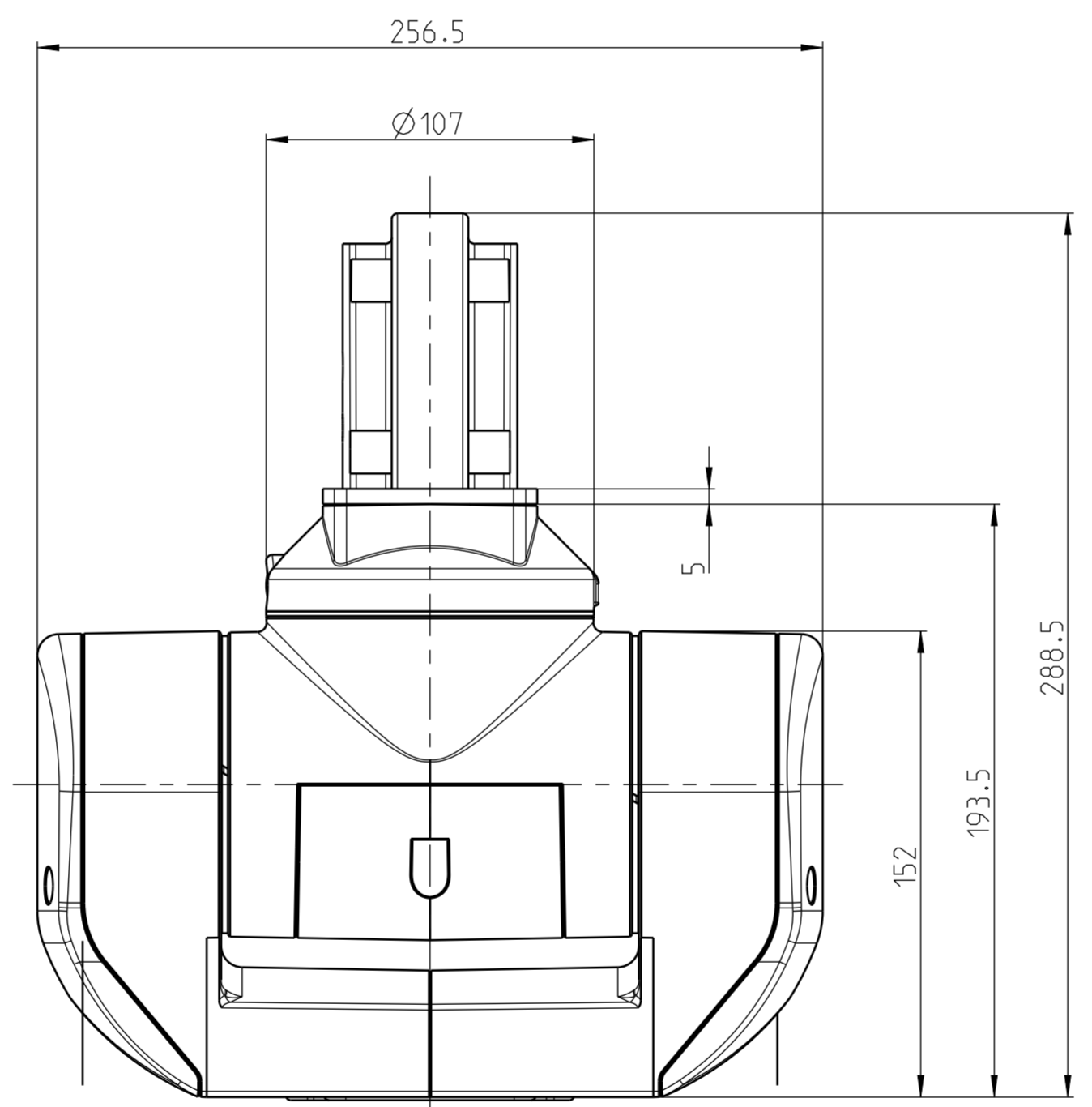
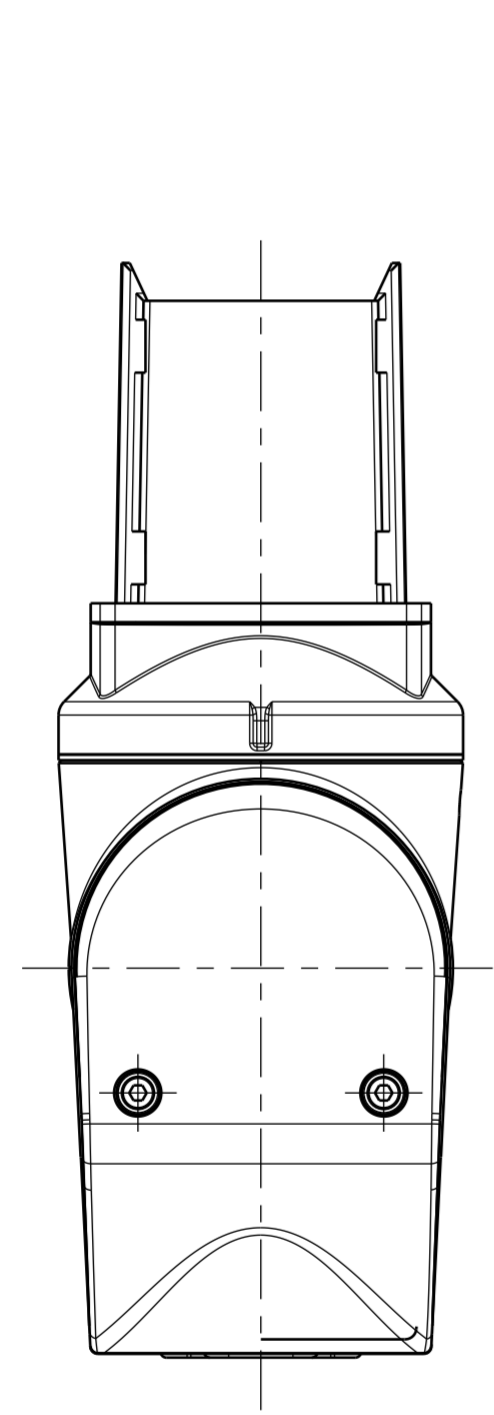
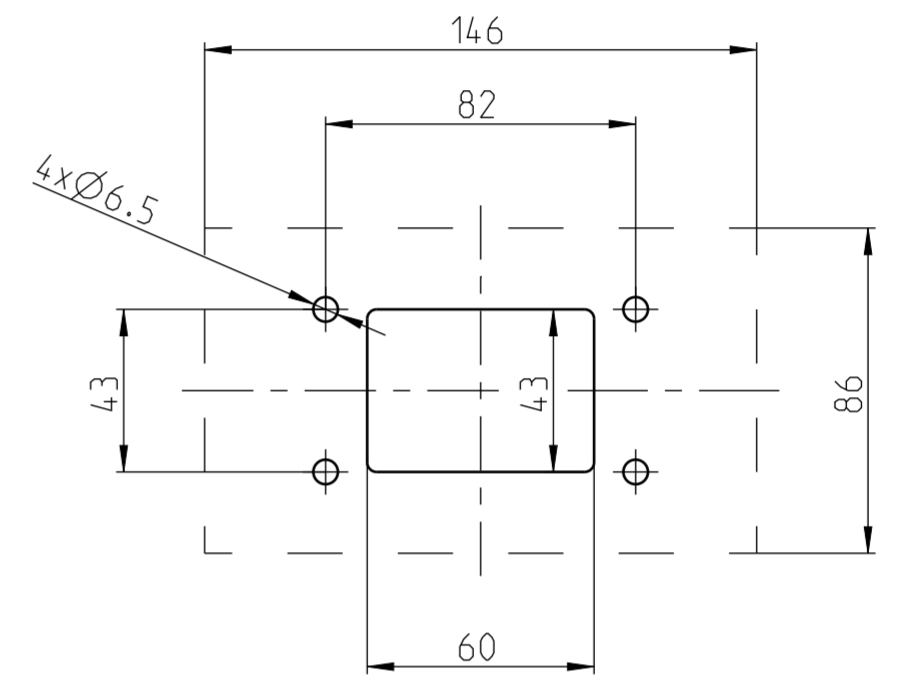


Bearbeitung der Montagefläche /
Machining of the mounting area



Mittellingsnummer/Notice number		 Bernstein AG Postfach 1164 D-32437 Porta Westfalica www.bernstein.eu	Masse ohne Toleranzangabe/General tolerances	
Entwicklungsnummer/Development number			ISO 2768-mH	
Umgearbeitet aus/Manufactured out of		Erstellt/Drawn by		Halbzeug/Semifinished part
		04.10.2018 M.Fehring		Oberfläche/Surface
Passend zu/Matched with		Geprüft/Checked by		RAL9006 / RAL7016
-		04.10.2018 F.Schömbner		Werkstoff/Material
Mst./Scale	A2	Freigegeben/Approved by		Gewicht ca./Weight approx.:
1:2		04.10.2018 M.Fehring		5.20386 kg
Benennung/Part Name		Nummer/Drawing No.		Blatt/Sheet
CS-3000 Drehneigungskupplung		1015300265		1
CS-3000 turn/tilt coupling		1015300266		3
				2

Vorlage : 0850172266_0rig_2