

Technical Data

Float Switch

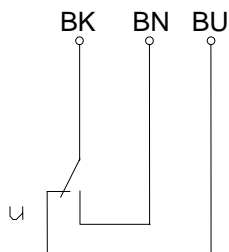
Standard float switches

Description **MAA-713 KSS 0940**

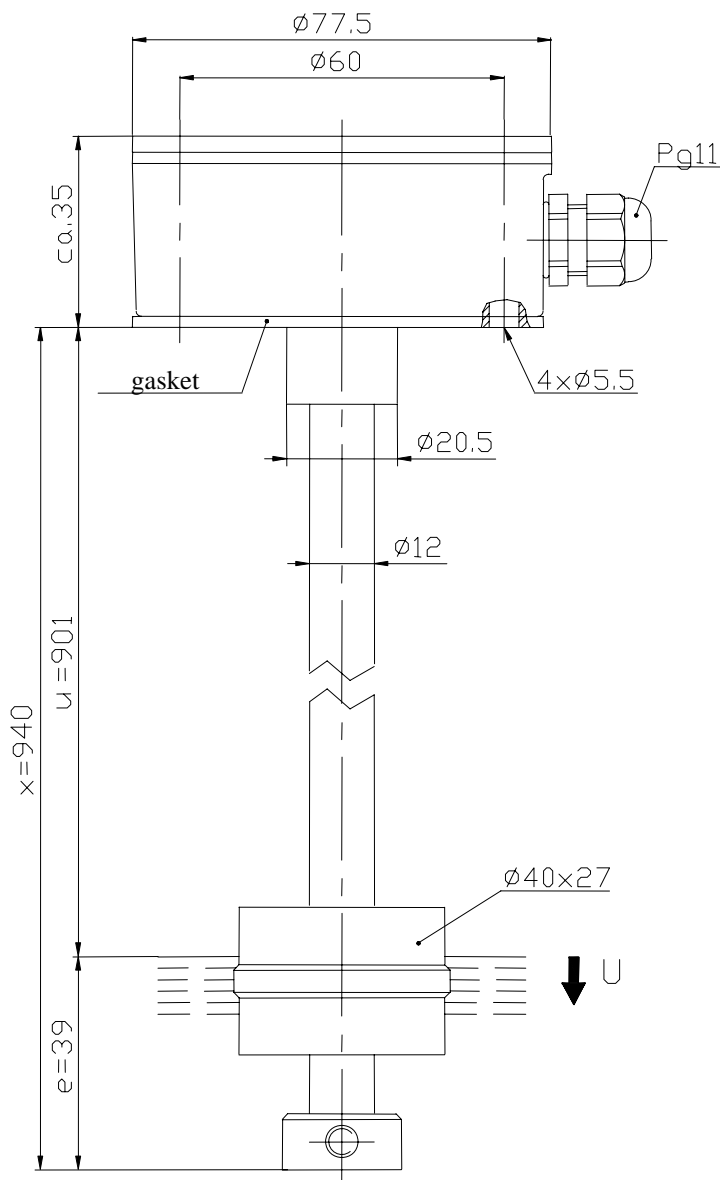
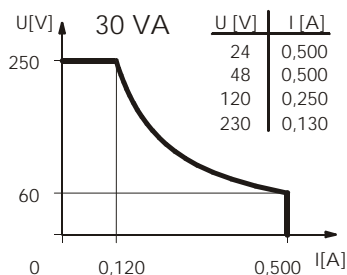
Article number **6815105411**

Wiring diagram

(none activated condition)



Performance diagram



Characteristic features in accordance with DIN EN 60947-1 and EN 62246-1

Electrical data

max. switching voltage	250 V
max. switching current	0,5 A
max. switching capacity	30 VA
mechanical life	10^7 to 10^9 switches depending on the load
Switching element	1 change over contact, falling level
Protection class	I

This document will not become the contractual basis; the details included herein do not constitute any descriptions of expected conditions, so that warranties/claims for defects on account of possible variations of the actual from the here described condition are excluded. Subject to modifications and amendments.

Date of issue : 08.02.2012 / Page 1 von 2
Document : 6815105411_en / Last update: 1 / 6441-12

Technical Data

Float Switch

Mechanical data

Terminal case material	GD-AISI12 (Cu) (3.2982.05)
Switching tube material	X6CrNiMoTi17-12-2 (1.4571)
Float material	POM
-density	about 0,7 g/cm ³ ±10%
-depth of immersion	18 mm ±2 mm (to a fluid-density of 1 g/cm ³)
Adjusting ring material	X6CrNiMoTi17-12-2 (1.4571)
Gasket material	NBR
Ambient air temperature	-5°C to +60°C
Liquid temperature	-5°C to +60°C
Connection	connection block inside the terminal box
Protection type	IP 65 acc to IEC 529 / EN 60529
Max. pressure	10 bar

EU Conformity

acc. to Directive 2006 / 95 / EC

General details

Repeatability of switching points is ±0,05mm based on the same geometrical conditions as of a switch device.

The measures of the switching points refer to a fluid-density of 1 g/cm³.

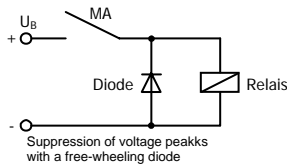
The tolerance of the switching points is ±2mm

Maximum data must not be exceeded!

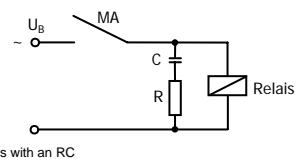
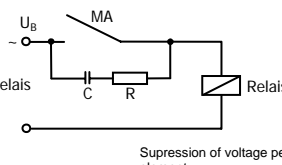
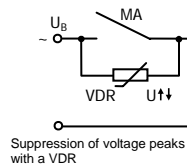
Pay attention to the contact protection, when switching inductive or capacitive loads!

Inductive loads

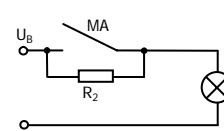
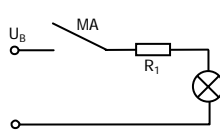
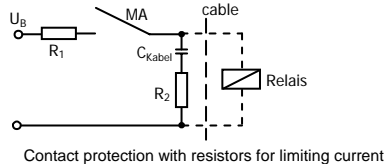
direct current voltage



alternating voltage



Capacitive loads and lamp loads



This document will not become the contractual basis; the details included herein do not constitute any descriptions of expected conditions, so that warranties/claims for defects on account of possible variations of the actual from the here described condition are excluded. Subject to modifications and amendments.

Date of issue : 08.02.2012 / Page 2 von 2
Document : 6815105411_en / Last update: 1 / 6441-12