

# Technical Data

## Float Switch

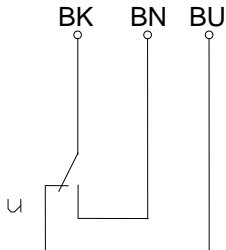
### Standard float switches

Description **MAA-713 KSS 0089**

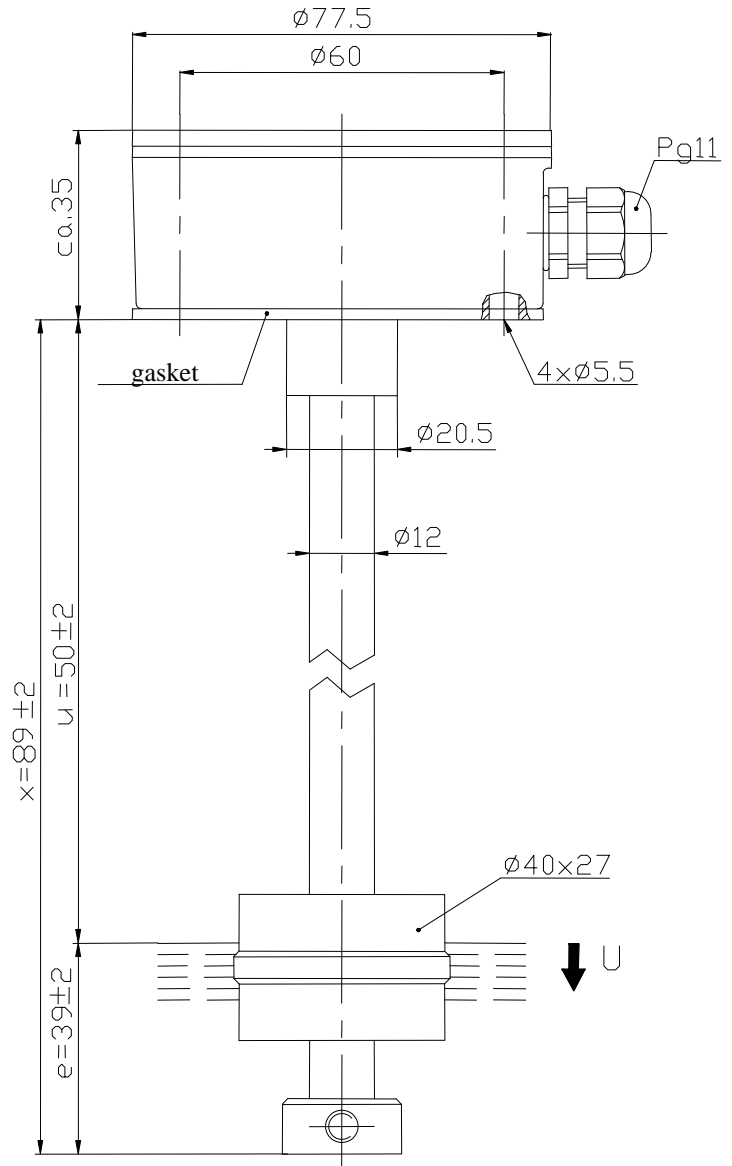
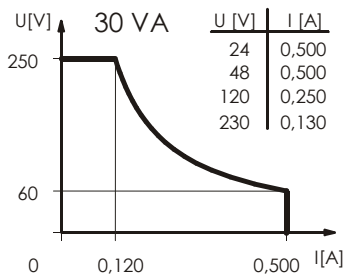
Article number **6815105102**

#### Wiring diagram

(none activated condition)



#### Performance diagram



#### Characteristic features in accordance with DIN EN 60947-5-1

##### Electrical data

max. switching voltage	250 V
max. switching current	0,5 A
max. switching capacity	30 VA
mechanical life	$10^7$ to $10^9$ switches depending on the load
Switching element	1 change over contact, falling level
Protection class	I

This document will not become the contractual basis; the details included herein do not constitute any descriptions of expected conditions, so that warranties/claims for defects on account of possible variations of the actual from the here described condition are excluded. Subject to modifications and amendments.

Date of issue : 16.01.2014 / Page 1 von 2  
Document : 6815105102\_en / Last update: 1

# Technical Data

## Float Switch

### Mechanical data

Terminal case material	GD-AlSi12 (Cu) (3.2982.05)
Switching tube material	X6CrNiMoTi17-12-2 (1.4571)
Float material	POM
-density	about 0,7 g/cm <sup>3</sup> ±10%
-depth of immersion	18 mm ±2 mm ( to a fluid-density of 1 g/cm <sup>3</sup> )
Adjusting ring material	X6CrNiMoTi17-12-2 (1.4571)
Gasket material	NBR
Ambient air temperature	-5°C to +60°C
Liquid temperature	-5°C to +60°C
Connection	connection block inside the terminal box
Protection type	IP 65 acc to IEC 529 / EN 60529
Max. pressure	10 bar

### EU Conformity

acc. to Directive 2006 / 95 / EC

### General details

Repeatability of switching points is ±0,05mm based on the same geometrical conditions as of a switch device.

The measures of the switching points refer to a fluid-density of 1 g/cm<sup>3</sup>.

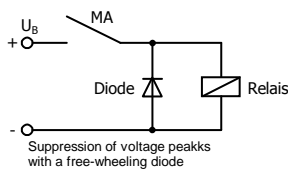
The tolerance of the switching points is ±2mm

Maximum data must not be exceeded!

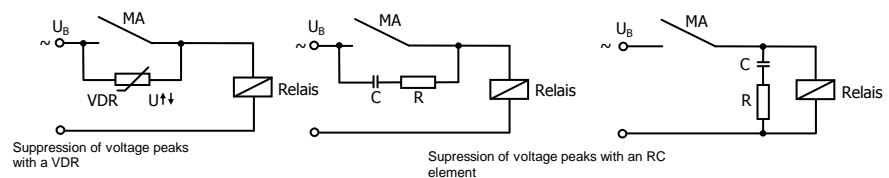
Pay attention to the contact protection, when switching inductive or capacitive loads!

### Inductive loads

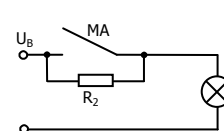
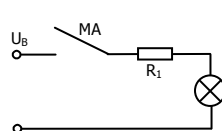
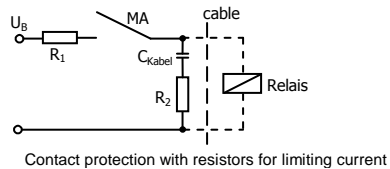
direct current voltage



alternating voltage



### Capacitive loads and lamp loads



This document will not become the contractual basis; the details included herein do not constitute any descriptions of expected conditions, so that warranties/claims for defects on account of possible variations of the actual from the here described condition are excluded. Subject to modifications and amendments.

Date of issue : 16.01.2014 / Page 2 von 2  
 Document : 6815105102\_en / Last update: 1