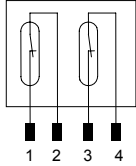


Series MA-42

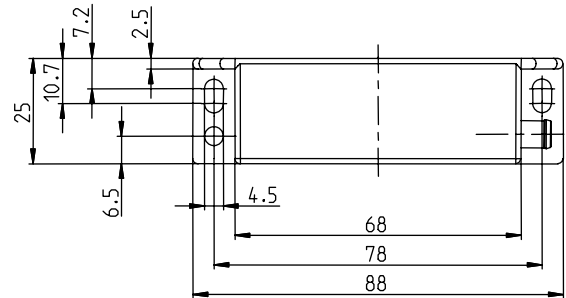
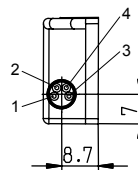
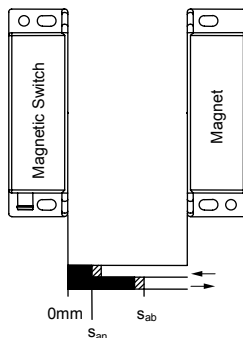
Type designation **MAK-4246-STK**

Item number **6490642050**

Wiring diagram



Actuation / operating distance



Electrical data

Operating distance	S_{an}	$\geq 5 \text{ mm}$
	S_{ab}	$\leq 14 \text{ mm}$
Reference magnet		TK-42-CD
Actuation		Coded magnetic system of type TK-42-CD/2 (6402042053)
Output		2 x N.C. for safety circuit
Max. voltage		30 V AC / 36 V DC
Mechanical lifetime		3×10^8 switchings, however, according to the load resetability
Repeat accuracy	R	$\pm 0,1 \text{ mm}$ (under same geometrical conditions at the same temperature)

Mechanical data

Housing	PA 6.6, black
Ambient air temperature	-25 °C ... +70 °C
Type of protection	IP 67 acc. to IEC 529, EN 60529, with snap-in plugs
Connection	Plug connector $\varnothing 8 \text{ mm}$, snap-in, 4-pole
Assembly position	optional

Bemerkungen

According to the standard norm DIN VDE 0660 Teil 209 a complete safety system (BWP) consists of sensor (MAK-4256), coded complement (TK-42-CD/2) and control unit (for example Bernstein safety relay SCR).

For the purpose of safety category according to EN 954-1 it is used a approved control unit (for example Bernstein safety relay SCR). The described magnetic switch alone is classify as a proven module.

This document will not become the contractual basis; the details included herein do not constitute any descriptions of expected conditions, so that warranties/claims for defects on account of possible variations of the actual from the here described condition are excluded. Subject to modifications and amendments.

Date of issue: 01.04.2008 / Page 1 of 1
Document: 6490642050_en.doc / Last update: 1 / 0027-08