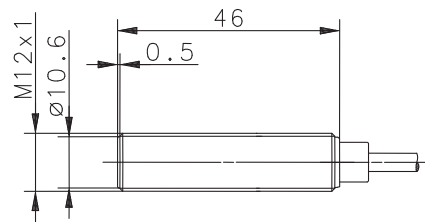
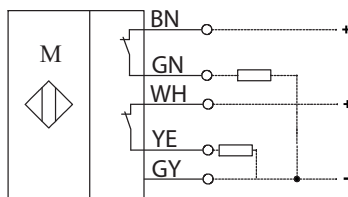


## Magnetic Sensor Series M12

Description **MEM-M12PÖ/M03-2**

Article number **6370162163**

### Wiring diagram



### Identifying characteristics in accordance with EN 60947-5-2

#### Electrical data

Assured operating distance	$S_a$	3 ... 30 mm
Switching function		2 x PNP, N.C.
Operational voltage range	$U_B$	10-30 VDC
Rated operational current	$I_e$	400 mA (each channel)
No-load supply current	$I_o$	< 20 mA
Voltage drop	$U_d$	< 3 V
Switching element		GMR, typ. 3 mT
Short-circuit protection		no
Assembly position		optional
False polarity protection		yes
Corresponding magnet		T-62 N/S

#### Electromagnetic compatibility (EMC)

Electromagnetic field test	IEC 61000-4-3
Electrostatic discharge test	IEC 61000-4-2
Electrical fast transient immunity test (Burst)	IEC 61000-4-4
Radiated disturbance field strength	EN 55011

#### Mechanical data

Enclosure	CuZn39Pb3
Front cap	PA 6.6
Ambient air temperature	-25 °C ... +70 °C (cabel fixed mounted)
Type of protection	IP 67 acc. to IEC 529, EN 60529
Termination type	Cable 5 x 0,25 mm <sup>2</sup> x 2 m; PVC-Outer jacket, gray

#### EU Conformity

acc. to directive 2004 / 108 / EC