

Technical Data

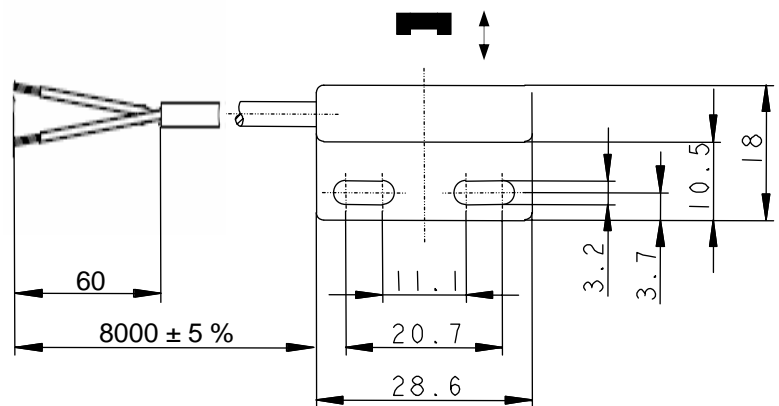
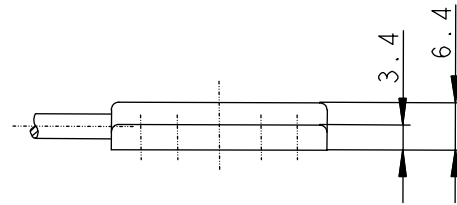
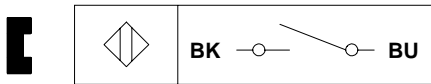
Magnetic switch

Series MA-11

Type designation **MAK-1112-B-8**

Item number **6311211662**

Wiring diagram



Electrical data

| | | |
|----------------------------|----------------|---|
| Assured operating distance | S _a | 10 mm |
| Switching element function | | N.O. |
| Reed contact: | | |
| max. switching voltage | | 250 V |
| max. switching current | | 0,5 A |
| max. switching capacity | | 10 VA |
| mechanical lifetime | | 3x10 ⁸ switchings, however, according to load resetability |
| Repeat accuracy | R | ± 0,1 mm |
| | | under same geometrical conditions at the same temperature |
| Max. Release point | | 22 mm |
| Shock | | 50 g (11 ms, ½ Sinus wave) |
| Vibration | | 20 g (10 – 2000 Hz) |
| Corresponding magnet | | TK-11-11 |

Mechanical data

| | |
|-------------------------|--|
| Enclosure | PA 6.6, black; encapsulated reed contact |
| Ambient air temperature | -5 °C ... +70 °C |
| Type of protection | IP67 (NEMA 4) according to IEC 529, EN 60529 |
| Termination type | cable 2 x 0,14 mm ² ; PVC -outer jacket black; |
| Assembly position | optional (assembly on iron means reduction of switch distance) |

This document will not become the contractual basis; the details included herein do not constitute any descriptions of expected conditions, so that warranties/claims for defects on account of possible variations of the actual from the here described condition are excluded. Subject to modifications and amendments.

Date of issue: 07.12.2010 / Page 1 of 1
 Document: 6311211662_en.doc / Last update: 1 / 0698-10