



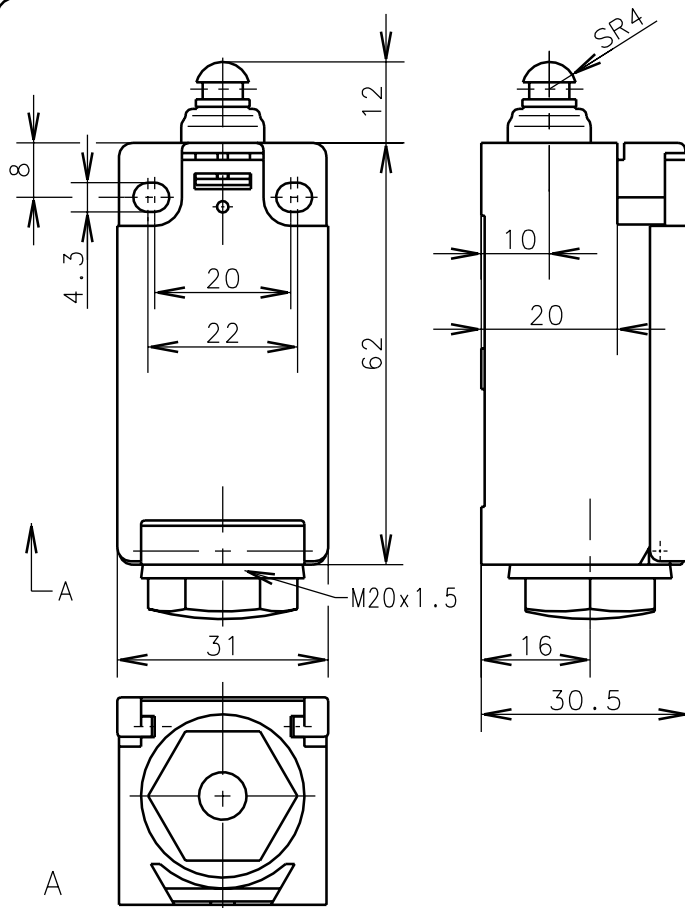
Bernstein

Bernstein AG
Postfach 1164
D-32437 Porta Westfalica

Technical data sheet

188-SU1Z w

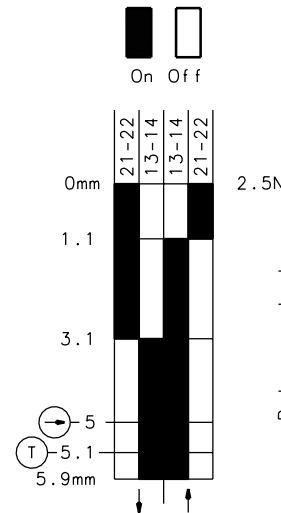
618.6153.357



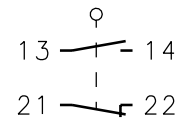
Positive opening operation according to DIN EN 60947-5-1 IEC 947-5-1

Ⓣ Gap between NC-contacts per EN 81

ID-No. 181 855



Return only by pulling the plunger



Switching diagram

Switching symbol

Tolerance: operating point $\pm 0.25\text{mm}$; actuating force $\pm 10\%$

Mechanical features

Enclosure:	Thermoplast, glass fibre reinforced (UL 94-V0) black
Cover:	Thermoplast, glass fibre reinforced (UL 94-V0)
Actuator:	Push bolt (thermoplast)

Ambient air temperature:	-30°C up to +80°C
Contact type:	1 NC-contact, 1 NO-contact (Zb)

Mechanical life:	10×10^6 switch operations
Switch frequency:	max. 60/min
Mounting:	2 x M4
Connection type:	4 screw connections (M3.5)
Cable entry size:	1 x self-sealing grommet M20x1.5 (tightness-range 8-13.5mm)
Weight:	approx. 0,06 kg

Electrical features

Max. voltage:	500 V AC
Max. enduring current:	1 th 10A
Max. inrush current:	according to IEC 947-5-1; AC 15; DC 13
Standards:	according to EN 60204; EN 60947-1; EN 60947-5-1
Protection class (IP-Code):	IP43 according to EN 60529, DIN VDE 0470 T1
CSA:	10A 300V AC, A300 (same polarity)
Short-circuit protection:	Fuse 2A gL/gG, IEC/EN 60947-5-1, appendix K

Approach possibilities

The push bolt actuator is mainly intended to be actuated along its axis. Side actuation will considerably reduce switch life.

Remarks

The moving parts should be oiled periodically.
The planned protection class (IP-Code) is valid only at closed cover.

Schutzvermerk nach DIN 34 beachten
Copyright reserved

04.01.2001