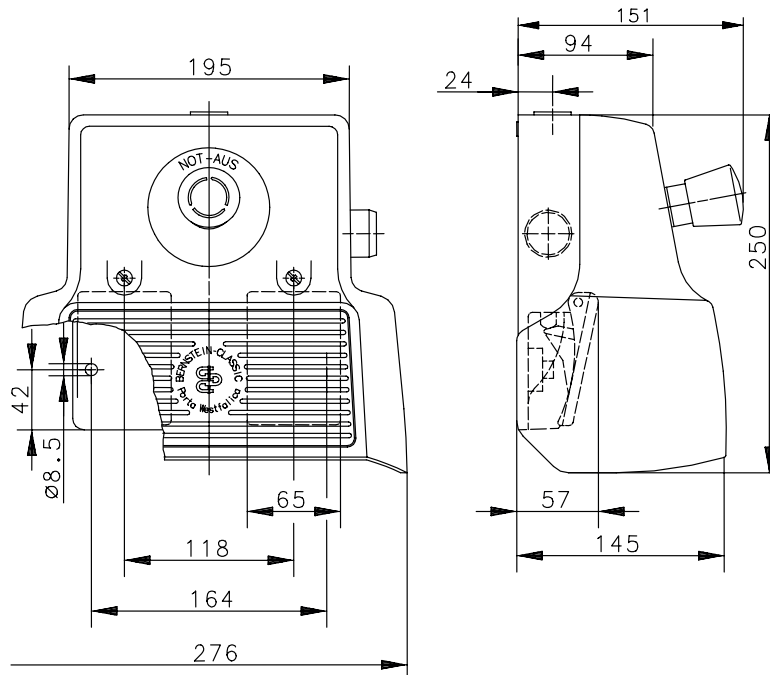


Foot-switch Series F2 UN

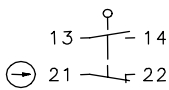
Description **F2-SU1Z/SU2ZDR NA2 UN**

Article number **6162890812**

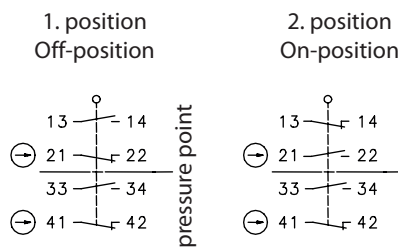


Switching symbol

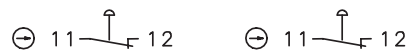
Pedal left



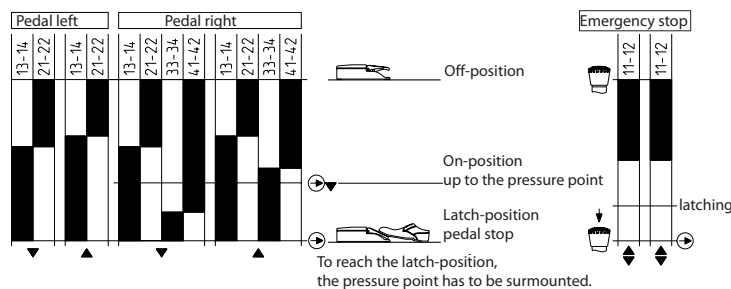
Pedal right



EMERGENCY STOP Mushroom
snap action and teaseproof according to
DIN EN ISO 13850, twist to release



Operating diagram



Approvals
cCSA _{US} A300 (same polarity) (apply for)
CCC

Notes
The degree of protection specified (IP code) applies only to a properly closed protective guard and the use of an equivalent cable gland with adequate cable.