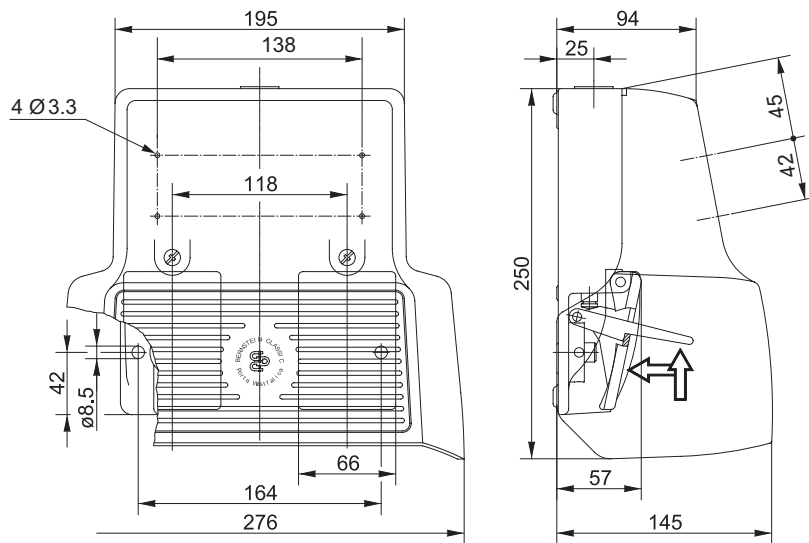


Foot-switch Series F2

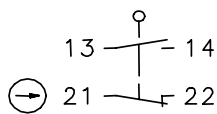
Description **F2-SU1ZAT/SU2ZDAT UN**

Article number **6162840827**

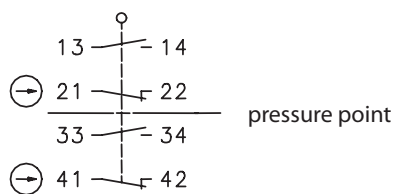


Operating symbol

Pedal left



Pedal right



Electrical data

Rated insulation voltage	U_i	400 V AC
Conv. thermal current	I_{the}	10 A
Rated operational voltage	U_e	240 V
Utilization category		AC-15, U_e 240 V / I_e 3 A
Direct opening action	\ominus	acc. to IEC/EN 60947-5-1, Annex K
Short-circuit protective device		Fuse 2 A gG
Protection class		I

Mechanical Data	
Enclosure	AL, die-cast, RAL 9005 (jet black)
Protective guard (Accident protection cover UN)	AL, die-cast, RAL 7016 (anthracite grey)
Actuator	Foot lever (PA, black), locking lever (Lexan, black)
Ambient air temperature	-30 °C ... +80 °C
Contact type	3 N.C. / 3 N.O. (Zb)
Operating force	≈ 10 N (pedal centre)
Pressure point	≈ 460 N
Mechanical life	
without actuating the pressure point	10 x 10 ⁶ switching cycles
with actuating the pressure point	1 x 10 ⁶ switching cycles
Switching frequency	≤ 50/min
Assembly	2 x M8
Connection	screw terminals (M3,5)
Number of connections	12 (see operating symbol)
Protection ground	2 x M4
Conductor cross-sections	Solid: 0,5 – 1,5 mm ² Litz wire with or without ferrules: 0,5 – 1,5 mm ²
Cable entry size	1 x M20 x 1,5
Weight including cover	≈ 2,8 kg
Protection type	IP 65 acc. to IEC/EN 60529 (Note under notes.)

ID for safety engineering	
B10d	20 x 10 ⁶ cycles

Standards	
	DIN EN 60947-5-1
	DIN EN ISO 13849-1/2

EU Conformity	
	acc. to directive 2014/35/EU (Low-Voltage-Directive)

Approvals	
	(The specified approvals only apply if the switch achieves protection class IP65. Note under notes.)
	cCSA _{US} A300 (same polarity)
	CCC

Notes	
Unused threaded holes and openings for fitted parts are to be permanently closed with blanking plugs or with the appropriate fitted inserts.	
The degree of protection specified (IP code) applies only to a properly closed protective guard and the use of an equivalent cable gland with adequate cable, blanking plugs, fitted inserts or sealing plugs.	