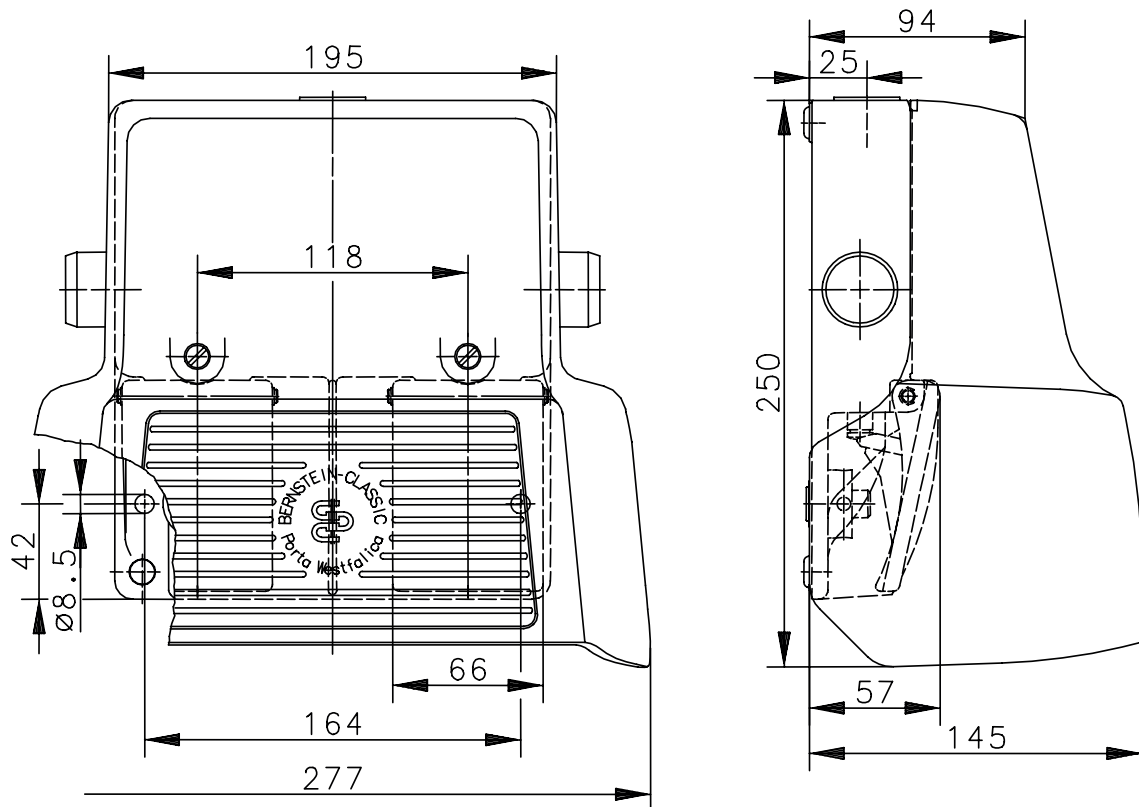


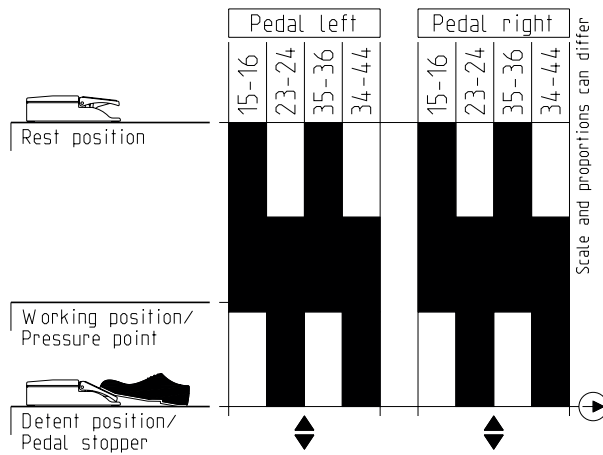
Foot-switch Series F2 UN

Description **F2-UV1ZUV1ZDR/UV1ZUV1ZDR UN**

Article number **6162000817**



Operating diagram



To reach the detent position of the pressure point must be overcome and the pedal are actuated to the stop.

| Electrical Data | | |
|---------------------------------|-----------|-----------------------------------|
| Rated insulation voltage | U_i | 400 V AC |
| Conv. thermal current | I_{the} | 10 A |
| Rated operational voltage | U_e | 240 V |
| Utilization category | | AC-15, U_e / I_e 240 V AC / 3 A |
| Direct opening action | ⊙ | acc. to IEC/EN 60947-5-1, annex K |
| Short-circuit protective device | | Fuse 10 A gG |
| Protection class | | I |

| Mechanical data | |
|---|--|
| Enclosure | AL, die-cast |
| Protective guard (Accident protection cover UN) | AL, die-cast |
| Actuator | Foot lever (PA) |
| Ambient air temperature | -30 °C to +80 °C |
| Contact type | 4 NC, 4 NO. (Zb) |
| Operating force (pedal centre) | 10 N |
| Pressure point | ≈ 200 N |
| Mechanical life | |
| without actuating the pressure point | 10 x 10 ⁶ operating cycles |
| with actuating the pressure point | 1 x 10 ⁶ operating cycles |
| Switching frequency | max. 50/min |
| Assembly | 2 x M8 |
| Connection | screw connections (M3,5) |
| Number of connection | 16 |
| Protection ground | 2 x M4 |
| Conductor cross-sections | Solid: 0,5 ... 1,5 mm ² Litz wire with ferrules: 0,5 ... 1,5 mm ² |
| Cable entrance | 1 x M25 x 1,5 |
| Weight | ≈ 3,0 kg |
| Protection type | IP65 in accordance with IEC/EN 60529 |

| ID for safety engineering | |
|---------------------------|-----------------------------|
| B10d | 20 x 10 ⁶ cycles |

| Regulations | |
|-------------|--|
| | VDE 0660 T100, DIN EN 60947-1, IEC 60947-1 |
| | VDE 0660 T200, DIN EN 60947-5-1, IEC 60947-5-1 |
| | DIN EN ISO 13849-1 |

| EU Conformity | |
|---------------|--|
| | acc. to directive 2014/35/EU (Low-Voltage-Directive) |

| Approvals | |
|-----------|--------------------|
| | cCSA _{US} |
| | CCC |

Safety function

Three stage safety footswitch with latch

The safety footswitch contacts are wired in series, this allows normal machine operation with the advantage of a safety latched „Emergency stop“ if the pedal is fully depressed.

1. Rest-Machine stopped.

2. Machine start is enabled by depressing pedal to the pressure point, this closed the normally open contacts 23-24 and 43-44.

In an emergency, the pedal is fully depressed (beyond the pressure point). The normally closed contacts 15-16 and 35 – 36 are force disconnected stopping the machine, simultaneously the latch engages and holds the contacts in this “Emergency stop” status, preventing an unauthorised re-start of the machine.

„Safety for man and machine“

4. Only after releasing the latch, by pressing the push button mounted in the side of the footswitch body, do the contacts reset allowing normal operation to resume.

Notes

The degree of protection specified (IP code) applies only to a properly closed protective guard and the use of an equivalent cable gland with adequate cable.