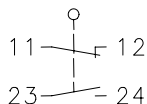


### Series GC

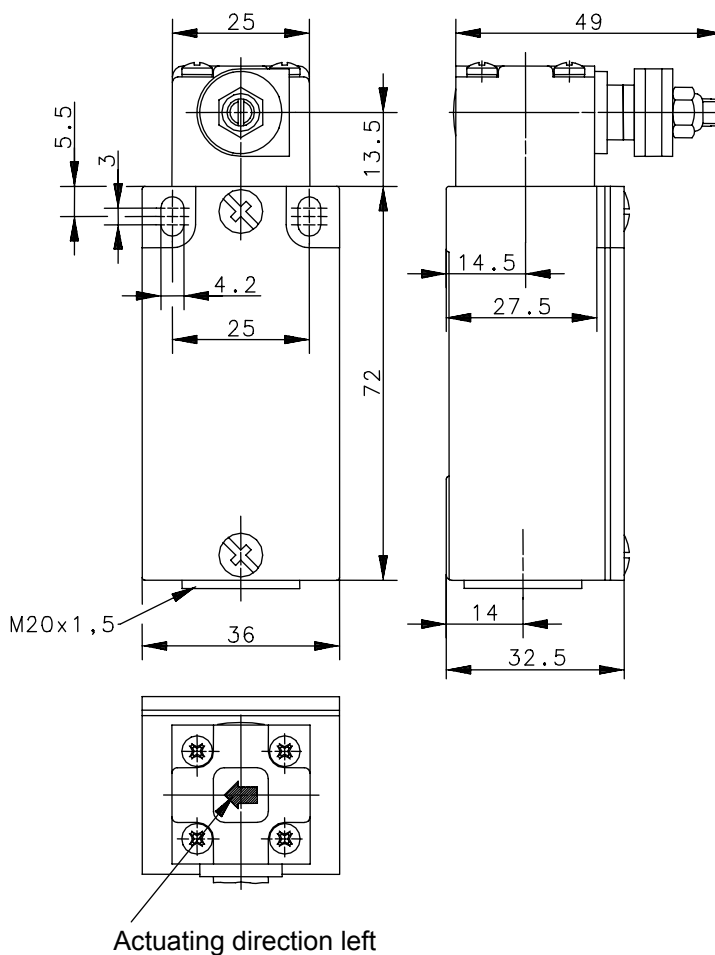
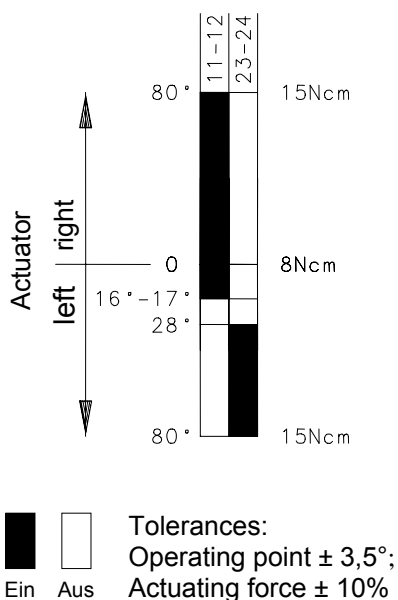
Description **GC-U1 AD/1**

Article number **6121137693**

#### Operating symbol



#### Operating diagram



#### Electrical data

|                                 |           |                          |
|---------------------------------|-----------|--------------------------|
| Rated insulation voltage        | $U_i$     | 400 VAC                  |
| Conv. thermal current           | $I_{the}$ | 10A                      |
| Rated operational voltage       | $U_e$     | 240V                     |
| Utilization category            |           | AC-15, $U_e/I_e$ 240V/3A |
| Short-circuit protective device |           | Fuse 2A gL/gG            |
| Protection class                |           | I                        |

This document will not become the contractual basis; the details included herein do not constitute any descriptions of expected conditions, so that warranties/claims for defects on account of possible variations of the actual qualities from the qualities described herein are explicitly excluded. All rights reserved. Specifications subject to change without notice!

Date of issue: 13.09.2006 / Page 1 of 2  
Document: 6121137693\_en / Last update: 1 / 2652-06

### Mechanical data

|                          |  |
|--------------------------|--|
| Enclosure                | Die-cast aluminium   |
| Cover                    | Sheet aluminium  |
| Actuator                 | Lever arm housing (Zn-DG)  |
| Ambient air temperature  | -30°C ... +80°C  |
| Contact type             | 1 NC, 1 NO   |
| Mechanical life          | 10 x 10 <sup>6</sup> operating cycles  |
| Switching frequency      | ≤ 100 / min.   |
| Assembly                 | 2 x M4   |
| Connection               | 4 screw terminals (M3.5)   |
| Conductor cross-sections | Solid: 0.5 ... 1.5mm <sup>2</sup><br>Litz wire with ferrules: 0.5 ... 1.5mm <sup>2</sup> |
| Cable entrance           | 1 x M20x1.5  |
| Weight                   | ≈ 0,2 kg   |
| Installation position    | Operator definable   |
| Protection type          | IP65 acc. to IEC/EN 60529  |

### Actuation

By loosening the 4 screws the actuation assembly can be rotated in 90 degree increments such that 4 actuation directions are possible. The actuation assembly is to be again fastened to the housing using the 4 screws.

|                  |  |
|------------------|--|
| <b>Standards</b> | VDE 0660 T100, DIN EN 60947-1, IEC 60947-1<br>VDE 0660 T200, DIN EN 60947-5-1, IEC 60947-5-1 |
|------------------|--|

|                      |           |
|----------------------|-----------|
| <b>EU Conformity</b> | <b>CE</b> |
|----------------------|-----------|

|                  |   |
|------------------|---|
| <b>Approvals</b> | cCSA <sub>US</sub> A300 (same polarity) |
|------------------|---|

### Notes

The specified protection classification (IP code) applies only when the cover is closed and the appropriate cable is used, in accordance with the clamping range of the above mentioned cable gland.