



Bernstein

Bernstein AG
Postfach 1164
D-32437 Porta Westfalica

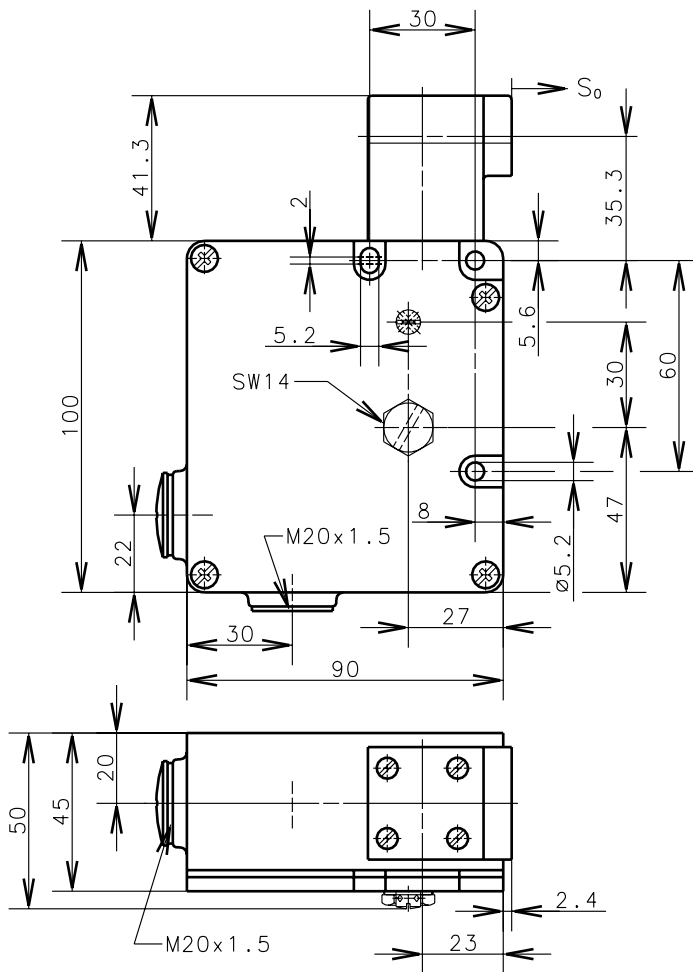
Technical data sheet: Safety switch

Metal encapsulated, 2 x M20x1.5, Locked by spring force

Type: SLM-FVTW230AC-55-ARX

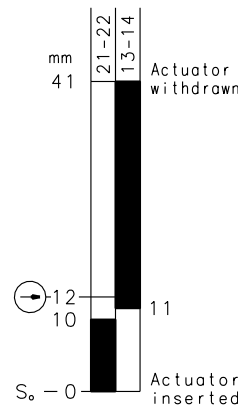
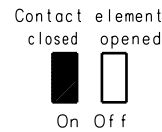
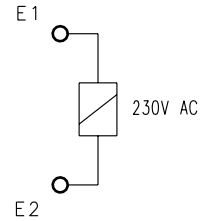
Art.-No.: 611.7119.028

Date: 02.08.02



MODEL SI-QM100BSG
P/N 49462

Termination electromagnet

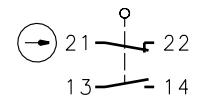


$F_{min.} = 30N$

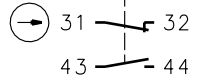
Contact travel

Tensile force

Position monitoring of guard locking (actuator inserted)



Position monitoring of electromagnet (actuator inserted)



Switch diagram

Contact operating force tolerance $\pm 15\%$

Schutzvermerk nach DIN 34 beachten
Copyright reserved

Mechanical features:	Electrical features:	Approvals:
Enclosure: Al-GD	Contacts elements	UL B300, R300
Cover: Al-sheet	Rated insulation voltage U_i : 250V	CSA B300, R300
Actuating head: Al-GD	Utilisation categorie: AC 12 250 V/10 A	
Separated actuator: without actuator		
Ambient air temperature: $-30^{\circ}C$ up to $+60^{\circ}C$	Utilisation categorie: AC 15 230 V/4 A	
Contact type: 2NC; 2NO (Zb)		Standards:
Switching principle: 4 slow make and break contact elements	Short circuit protection: DIAZED-safety implants Operating categorie gL/gG 10A TDz, 16A Dz	VDE 0660 T100, EN 60947-1 VDE 0660 T200, EN 60947-5-1
Mechanical life: 1×10^6 switch operations	Electromagnet:	IEC 60947-5-1
Velocity for actuating: $v_{max.} = 1.5m/s$	Duty cycle: 100 % ED	GS-ET 19
Mounting according DIN EN 50041 3 screws M5	Temperature class: B	
	Power consumption: $P_{20} = 5.2W$	Remarks:
Termination cross section: $1mm^2$ flex.	Operating voltage: 230V AC	The rated protection class (IP-Code) is valid only at closed cover and when using an at least equivalent cable gland.
Terminals: 10 screws M3.5		
2 non-fused earthed conductor M4		
Cable entry size: 2 x M20x1.5		
Weight: approx. 0,83 kg	Safety instructions	
Protection class (IP-Code): IP67 according to EN 60529; DIN VDE 0470 T1	<ul style="list-style-type: none"> Do not use this safety switch as a mechanical end stop! When power is removed from the electromagnet (solenoid) the safety guard will be in locked position. Remove hexagonal nutscrew and push internal resin plunger in order to activate auxiliary release function. Four approach directions for actuator are available. Turning the actuator head ($4 \times 90^{\circ}$) only when the actuator is plugged in. The actuator head is to be again fastened reliable to the housing using all four screws! Pre-travel actuator (compensation of shock and vibrations) approx. 9 mm. 	
Build in location: selectable		
Locking principle: spring force latching		
Unlocking: a) magnetic force b) auxiliary release (look at remarks)		
Locking force: 1000 N retaining force in locked position		

Copies are not retreated in case of alternations