

# Technical Data

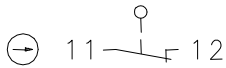
## Plastic bodied limit switch

### Series I88

Description **I88-A1Z KS**

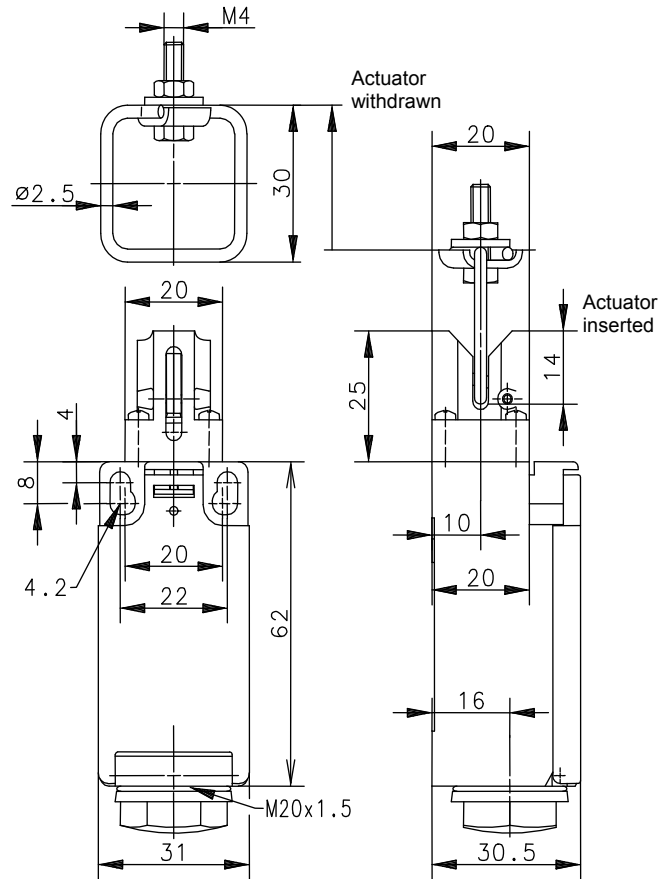
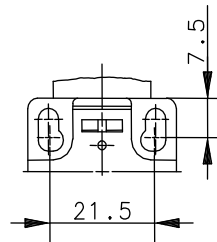
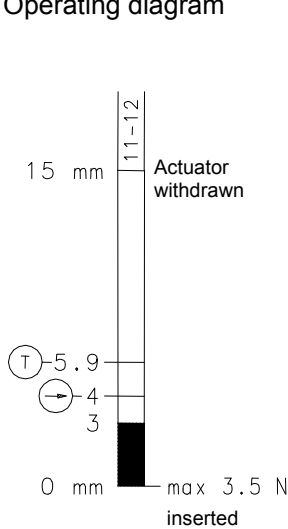
Article number **6116869229**

Operating symbol



Fixed positioning for safety applications  
Mounting screw according to DIN 912 M5

Operating diagram



### Electrical data

|                                 |            |                                   |
|---------------------------------|------------|-----------------------------------|
| Rated insulation voltage        | $U_i$      | 250 V AC                          |
| Conv. thermal current           | $I_{the}$  | 10 A                              |
| Rated operational voltage       | $U_e$      | 240 V                             |
| Utilization category            |            | AC-15, $U_e / I_e$ 240 V / 3 A    |
| Direct opening action           | $\ominus$  | acc. to IEC/EN 60947-5-1, Annex K |
| Gap between NC-contacts         | $\text{Ⓢ}$ | DIN EN 81                         |
| Short-circuit protective device |            | Fuse 10 A gG                      |
| Protection class                |            | II, totally insulated             |

This document will not become the contractual basis; the details included herein do not constitute any descriptions of expected conditions, so that warranties/claims for defects on account of possible variations of the actual qualities from the qualities described herein are explicitly excluded. All rights reserved. Specifications subject to change without notice!

Date of issue: 18.01.2013 / Page 1 of 2  
Document : 6116869229\_en / Last update : 1 / 2056-13

# Technical Data

## Plastic bodied limit switch



|                          |   |
|--------------------------|---|
| <b>Mechanical data</b>   |   |
| Enclosure                | Thermoplastic, glass fibre reinforced (UL 94-V0)  |
| Cover                    | Thermoplastic, glass fibre reinforced (UL 94-V0)  |
| Actuator                 | Separate actuator (steel)   |
| Ambient air temperature  | -30 °C ... +80 °C   |
| Contact type             | 1 NC (Y)  |
| Mechanical life          | 1 x 10 <sup>6</sup> switching cycles  |
| Switching frequency      | ≤ 30/min  |
| Assembly                 | 2 x M4  |
| Connection               | 2 screw connections (M3,5)  |
| Conductor cross-sections | Solid: 0,5 ... 1,5 mm <sup>2</sup> or<br>Litz wire with ferrules: 0,5 ... 1,5 mm <sup>2</sup>             |
| Cable entrance           | 1 x self-sealing grommet M20 x 1,5 (closed)   |
| Weight                   | ≈ 0,07 kg   |
| Installation position    | Operator definable  |
| Protection type          | IP54 acc. to EN 60529; DIN VDE 0470 T1  |
| <b>Standards</b>         |   |
|                          | VDE 0660 T100, DIN EN 60947-1, IEC 60947-1<br>VDE 0660 T200, DIN EN 60947-5-1, IEC 60947-5-1<br>DIN EN 81 |
| <b>EU Conformity</b>     |   |
|                          | acc. to directive 2006/95/EC  |
| <b>Approvals</b>         |   |
|                          | cCSA <sub>US</sub> A300 (same polarity)   |

### Notes

The degree of protection specified (IP code) applies only to a properly closed cover.

This document will not become the contractual basis; the details included herein do not constitute any descriptions of expected conditions, so that warranties/claims for defects on account of possible variations of the actual qualities from the qualities described herein are explicitly excluded. All rights reserved. Specifications subject to change without notice!