



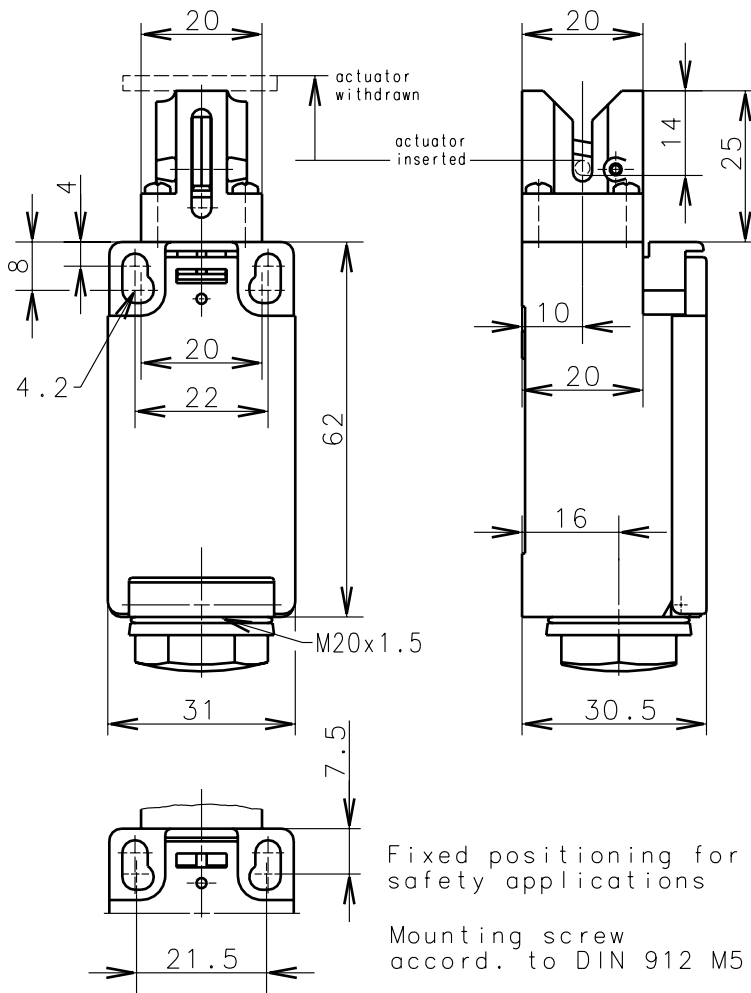
Bernstein

Bernstein AG
Postfach 1164
D-32437 Porta Westfalica

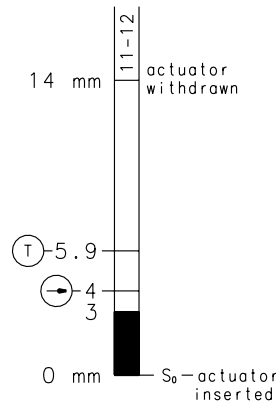
Technisches Datenblatt

188-A1Z KS

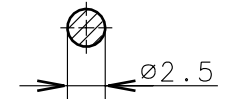
611.6869.128



- Positive opening operation according to DIN EN 60947-5-1 IEC 60947-5-1
- Gap between NC-contacts per EN 81



cross section of the actuator (2:1)



Traction travel Traction force Switch diagram

Schutzvermerk nach DIN 34 beachten
Copyright reserved

Mechanical features

Enclosure: Thermoplast, glass fibre reinforced (UL 94-V0)
 Cover: Thermoplast, glass fibre reinforced (UL 94-V0)
 Actuator: separate actuator

Ambient air temperature: -30°C up to +80°C
 Contact type: 1 NC-contact (Y)

Mechanical life: 1×10^6 switch operations
 Switch frequency: max. 30/min
 Mounting: 2 x M4
 Connection type: 2 screw connections (M3,5)
 Conductor cross-section: single core 0.5-1.5mm²/litz wire with connector sleeve 0.5-1.5mm²
 Cable entry size: 1 x self-sealing grommet M20x1.5, cross section of the cable 8-13.5mm
 Weight: approx. 0,06kg

Electrical features

Rated insulation voltage: $U_i = 250$ V AC
 Conventional thermal current: $I_{the} = 10$ A
 Rated operational voltage U_e : 230V AC/180V DC
 Rated operational current I_e : 2A AC/0.5A DC
 Standards: according to EN 60947-5-1; EN 81-1,-2
 Protection class (IP-Code): IP54 according to EN 60529; DIN VDE 0470 T1
 CSA: 10A 300V AC, A300 (same polarity)
 Short-circuit protection: Fuse 10A gL/gG, IEC/EN 60947-5-1, appendix K

Remarks:

Do not use switch as end stop.
 Switching diagram is valid only for the represent cross section of the actuator.
 The rated protection class (IP-Code) is valid only at closed cover.

19.03.2003