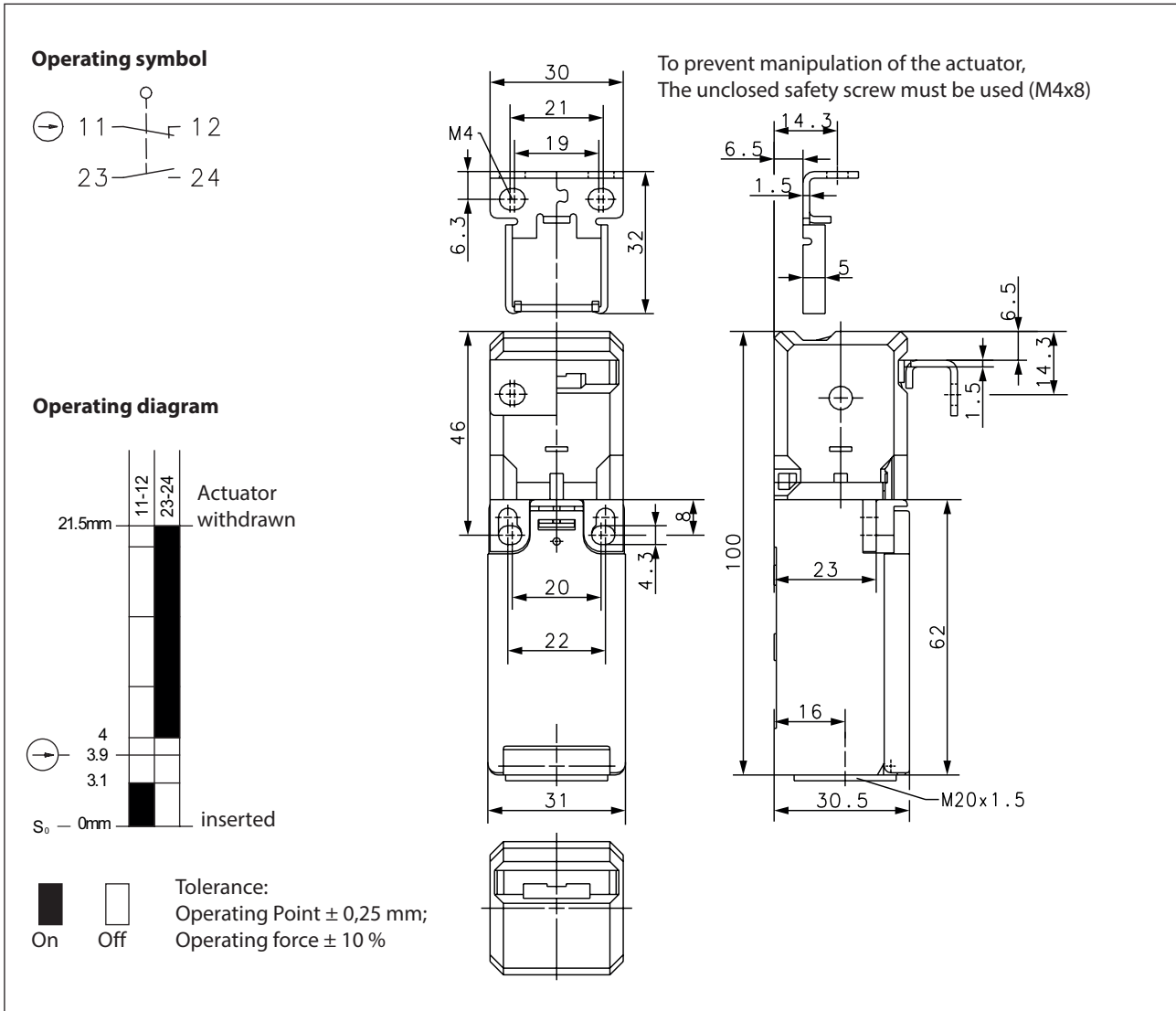


Safety switch Series SKI – with separate actuator

Description **SKI-U1Z M3 SW NORM**

Article number **6116819121**



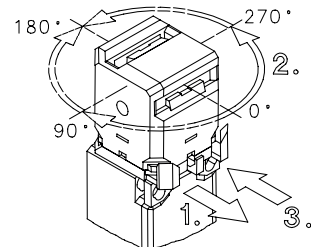
Electrical Data

Rated insulation voltage	U_i	250 V AC
Conv. thermal current	I_{the}	10 A
Utilization category		AC-15, U_e/I_e 240 V / 3 A DC-13, U_e/I_e 24 V / 4 A
Direct opening action	\ominus	acc. to IEC/EN 60947-5-1, annex K
Short-circuit protective device		Fuse 10 A gG
Protection class		II, totally insulated
Electrical life (90%)		$8,0 \times 10^5$ switching cycles (at DC-13; 24V; $I_{e2} = 1.0A$ at frequency 60/min)

Mechanical data	
Enclosure	Thermoplastic, glass fibre reinforced (UL 94-V0)
Cover	Thermoplastic, glass fibre reinforced (UL 94-V0)
Actuator	Separate actuator (metal)
Extraction force	10 N
Ambient air temperature	-30° C ... +80° C
Contact type	1 NC, 1 NO (Zb)
Mechanical life	1 x 10 ⁶ operating cycles
Switching frequency	≤ 30 / min.
Assembly	Safety switch 2 x M4
	Actuator 2 x M4
Connection	4 screw connections (M3,5)
Conductor cross-sections	Solid: 0,5 ... 1,5 mm ² or Litz wire with ferrules: 0,5 ... 1,5 mm ²
Cable entrance	1 x M20 x 1,5
Weight	≈ 0,13 kg
Installation position	operator definable
Protection type	IP65 acc. to IEC/EN 60529

Characteristics for functional safety	
B10 _d - NC contact	2 x 10 ⁶ switching cycles (at DC-13; 24 V; I _{e2} = 0,1 A)
B10 _d - NC contact	1,9 x 10 ⁶ switching cycles (at DC-13; 24 V; I _{e2} = 1,0 A at frequency 60/min)
B10 _d - NO contact	0,5 x 10 ⁶ switching cycles (at DC-13; 24 V; I _{e2} = 0,1 A)

Actuation	
To achieve the 8 different actuator points please follow the next instructions	
(1)	pull fixing clamp
(2)	turn actuator
(3)	push fixing clamp



Standards	
	DIN EN 60947-5-1
	DIN EN ISO 13849-1
	DIN EN ISO 14119-1

EU Conformity	
	acc. to directive 2006/42/EC (Machinery Directive)

Approvals	
	TÜV Rheinland, Product Safety
	cCSA _{US} A300 (same polarity)
	CCC

Notes

The degree of protection (IP code) specified applies solely to a properly closed cover and the use of an equivalent cable gland with adequate cable.

The switch may not be used as a mechanical stop.

Radial actuation may reduce the mechanical life.

The min. radius refers to a pivot at the top of the cap (S0).

Tapped holes not in use must be closed with blind plugs.

