

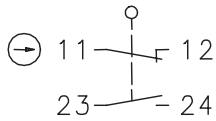
# Safety switch

## Series SKT- with separate actuator

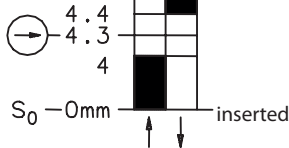
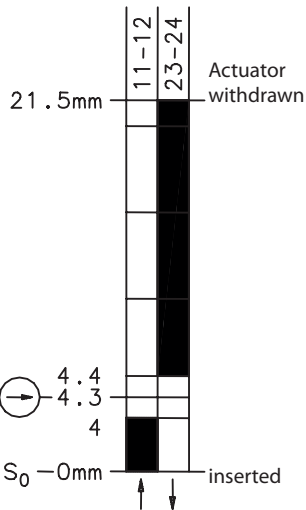
Description **SKT-U1Z M3 X**

Article number **6116419292**

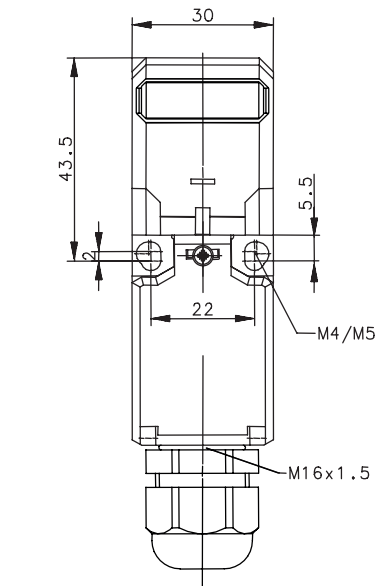
### Operating symbol



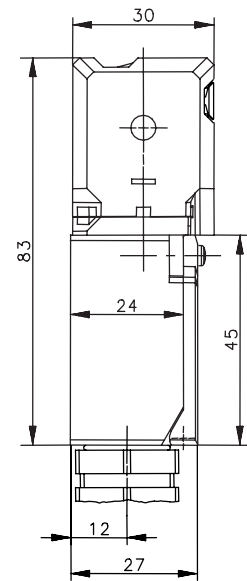
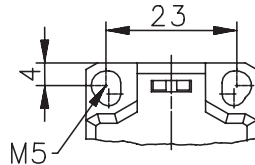
### Operating diagram



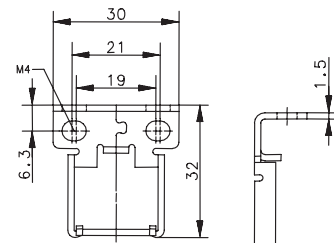
On  
 Off  
 Tolerance:  
 Operating Point  $\pm 0,25$  mm;  
 Operating force  $\pm 10$  %



Fixed positioning with e.g. fixing screw M5 according to the standard DIN EN ISO 4762.

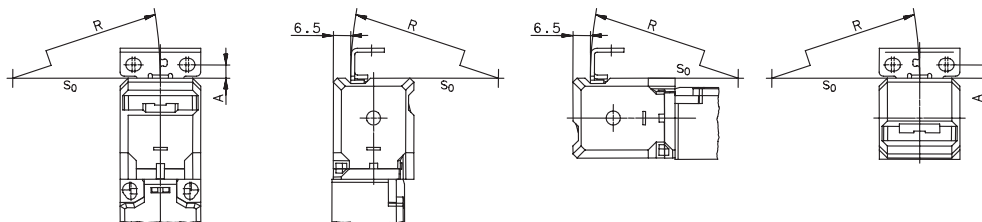


### Actuator M3



Use screws with a disposable head to secure the actuator against manipulation.

### Radial actuation / dimensions

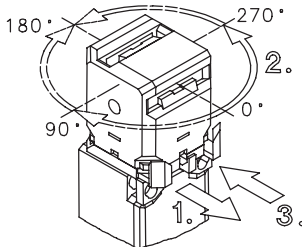


$5 \text{ mm} \leq A \leq 8 \text{ mm}$ ,  $R \geq 150 \text{ mm}$   
 The min. radius refers to a pivot at the top of the cap ( $S_0$ )

Electrical Data		
Rated insulation voltage	$U_i$	250 V
Conv. thermal current	$I_{the}$	10 A
Rated operational voltage	$U_e$	240 V AC; 250 V DC
Utilization category		AC-15, $U_e / I_e$ 240 V / 3 A; DC-13, $U_e / I_e$ 250 V / 0,27 A
Direct opening action	$\ominus$	according to IEC/EN 60947-5-1, Annex K
Short-circuit protective device		Fuse 6 A gG
Protection class		II, totally insulated

Mechanical data		
Enclosure		PBT
Cover		PA 6.6
Actuator		Separate actuator (St-stainless steel)
Extraction force		10 N
Ambient air temperature		-30 °C ... +80 °C
Contact type		1 NC (Zb), 1NO
Mechanical life		1 x 10 <sup>6</sup> switch operations
Switching frequency		≤ 30 / min.
Assembly	Safety switch	2 x M4 or M5
	Actuator	2 x M4 (supplied)
Connection		screw connections (M3,5)
Conductor cross-sections		Solid: 0,5 ... 1,5 mm <sup>2</sup> Litz wire with ferrules: 0,5 ... 1,5 mm <sup>2</sup>
Cable entrance		1 x cable gland M16 x 1,5 (clamping range 2 mm - 7 mm)
Weight		≈ 0,1 kg
Protection type		IP65 acc. to IEC/EN 60529

ID for safety engineering	
B10d	2 x 10 <sup>6</sup> cycles

Actuation	
<ol style="list-style-type: none"> <li>draw clasp out</li> <li>turn actuator head (4 x 90° rotation)</li> <li>press-on clasp</li> </ol>	

Standards	
	DIN EN 60947-5-1
	DIN EN ISO 13849-1

EU Conformity	
	acc. to directive 2006/42/EC (Safety-of-Machinery-Directive)

Approvals	
	TÜV Rheinland, Product Safety
	CCC
cUL <sub>US</sub>	A300, Q300
cCSA <sub>US</sub>	A300, Q300 (same polarity)

Notes
<p>Radial actuation may reduce the mechanical life.                      Unused actuator entry slot must be covered by the plug.                      The switch may not be used as a mechanical stop.</p> <p>The degree of protection (IP code) specified applies solely to a properly closed cover with screw and the use of an equivalent cable gland with adequate cable.</p>