

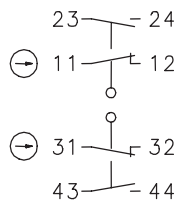
Rope pull switch

Series SI2

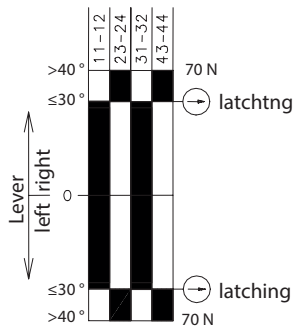
Description **SI2-U2Z AK R-RAST**

Article number **6115725397**

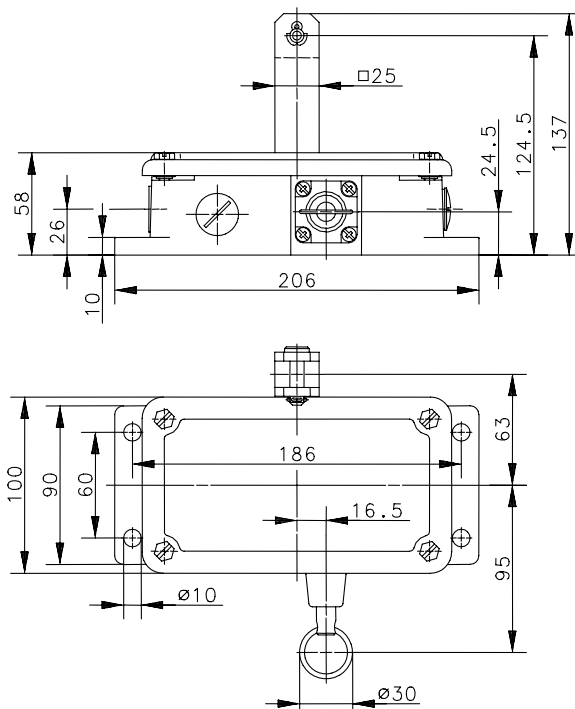
Operating symbol



Operating diagram



Tolerance:
 Operating point $\pm 5^\circ$
 Actuating force $\pm 10\%$
 Latching according to DIN EN ISO 13850



Electrical Data

Rated insulation voltage	U_i	400 V AC
Conv. thermal current	I_{the}	10 A
Rated operational voltage	U_e	240 V
Utilization category		AC-15, U_e/I_e 240 V / 3 A
Positive opening NC contact	\ominus	acc. to IEC/EN 60947-5-1, Annex K
Short-circuit protective device		Fuse 10 A gG
Protection class		I

Mechanical data	
Enclosure	Gray iron
Cover	Gray iron
Actuator	Lever (St)
Length of guying *	75 m per side (see notes)
Ambient air temperature	-30 °C to +80 °C
Contact type	2 NC, 2 NO (Zb)
Reset facility	Rotate pulling the key-ring (≥ 50N)
Mechanical life	1 x 10 ⁶ operating cycles
Switching frequency	≤ 10 / min.
Assembly	4 x M8
Connection	8 screw terminals (M3,5)
Conductor cross-sections	Solid: 0,5 ... 1,5 mm ² Litz wire with ferrules: 0,5 ... 1,5 mm ²
Cable entrance	3 x M20 x 1,5
Weight	≈ 4,21 kg
Installation position	operator definable
Protection type	IP65 acc. to IEC/EN 60529

ID for safety engineering	
B10d	2 x 10 ⁶ cycles

Standards	
	DIN EN 60947-5-1
	DIN EN ISO 13849-1
	DIN EN ISO 13850

EU Conformity	
	acc. to directive 2014/35/EU (Low-Voltage-Directive)

Approvals	
	cCSA _{US} A300
	UL
	CCC

Notes	
<p>The degree of protection (IP code) specified applies solely to a property closed cover and the use of an equivalent cable gland with adequate cable.</p> <p>Two rope thimbles (thimble DIN 65457 - nominal size 4) mounted on the lever.</p> <p>* DIN EN 60947-5-5 requires tripping forces and tripping distances, they are for safety and must not be exceeded.</p> <p>Since the required release forces and release distances depend in particular on the distance and ease of movement of the rope supports, compliance with the standard requirements is the responsibility of the system operator.</p>	