



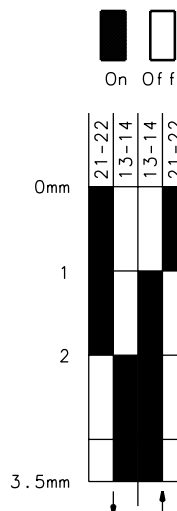
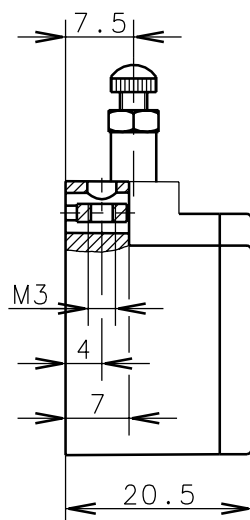
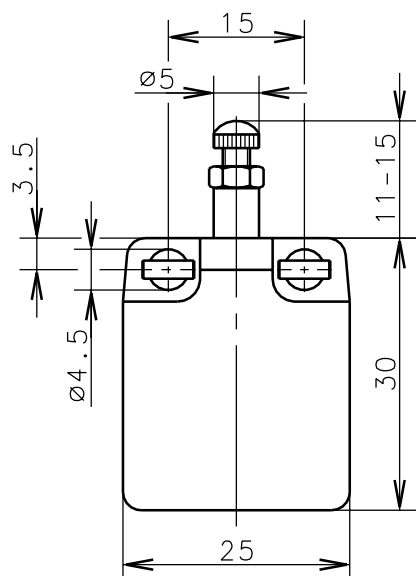
Bernstein

Bernstein AG
Postfach 1164
D-32437 Porta Westfalica

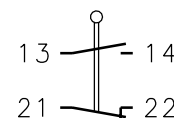
Technical data sheet

C-SU1 St Bistabil

610.1154.140



Return only by
pulling the plunger



Switching diagram

Switching symbol

Tolerance: operating point $\pm 0.25\text{mm}$; actuating force $\pm 10\%$

Mechanical features

Enclosure:	Polyamide, glass fibre reinforced
Cover:	Polycarbonate, glassy
Actuator:	Adjusting screw adjustable; thread M3 with a lock nut

Ambient air temperature:	-30°C up to +80°C
Contact type:	1 NC-contact, 1 NO-contact

Mechanical life:	3×10^6 switch operations
Switch frequency:	max. 60/min
Mounting:	2 x M4
Connection type:	4 screws connections (M3)
Cable entry size:	except rectangle 8x2mm and 5x5mm
Weight:	approx. 0,04 kg

Electrical features

Max. voltage:	250 V AC
Max. enduring current:	I_{the} 6A
Max. inrush current:	according to IEC 60947-5-1, AC 15, DC 13
Standards:	according to EN 60947-1, EN 60947-5-1
Protection class:	IP00 according to EN 60529; DIN VDE 0470 T1
Short circuit protection:	4A slow-acting, 6A quick-acting

Approach possibilities

The push bolt actuator is mainly intended to be actuated along its axis. Side actuation will considerably reduce switch life.

Remarks

The moving parts should be oiled periodically.