



Bernstein

Bernstein AG
Postfach 1164
D-32437 Porta Westfalica

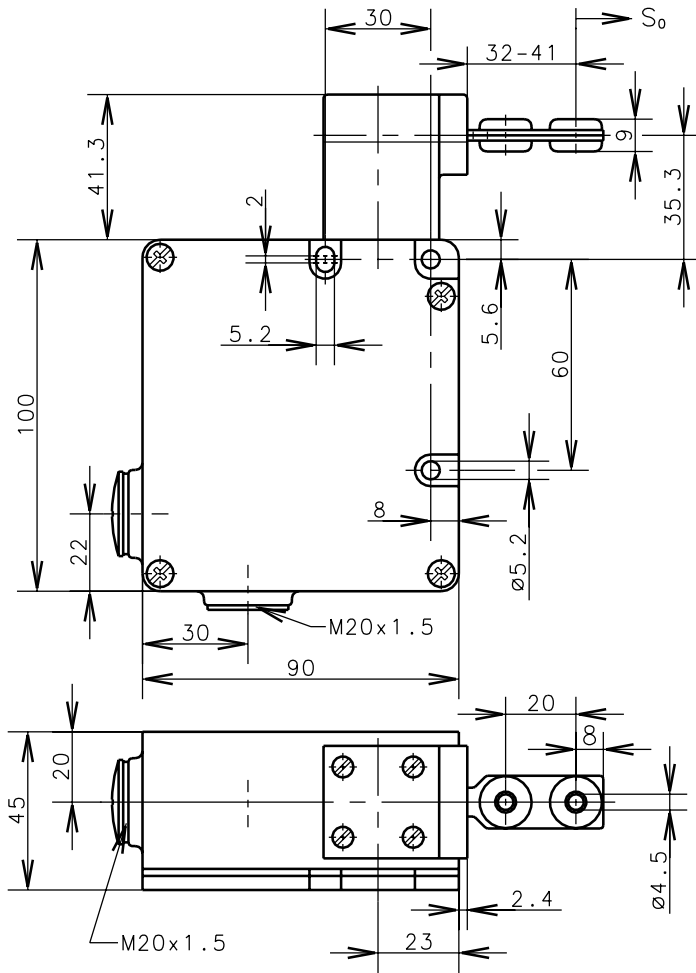
Technical data sheet: Safety switch

Metal encapsulated, 2 x M20x1.5, Locked by magnetic force

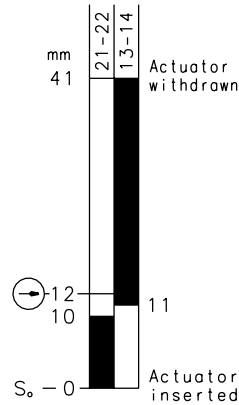
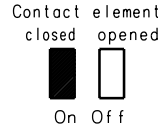
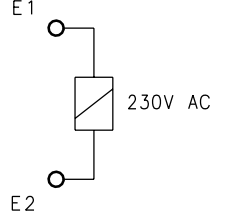
Type: SLM-MVTW230AC-55

Art.-No.: 601.7119.024

Date: 03.05.01



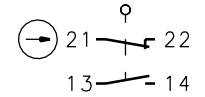
Termination electromagnet



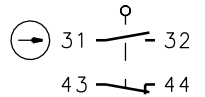
$F_{min.} = 30N$

Tensile force

Position monitoring of guard locking



Position monitoring of electromagnet



Switch diagram

Contact operating force tolerance $\pm 15\%$

Schutzvermerk nach DIN 34 beachten
Copyright reserved

Mechanical features:	Electrical features:	Approvals:
Enclosure: Al-GD	Contacts elements	BG
Cover: Al-sheet	Rated insulation voltage U_i : 250V	UL B300, R300
Actuating head: Al-GD	Utilisation categorie: AC 12 250 V/10 A	CSA B300, R300
Separated actuator: St/PA	Utilisation categorie: AC 15 230 V/4 A	Standards:
Ambient air temperature: -30°C up to +60°C	Short circuit protection: DIAZED-safety implants Operating categorie gL/gG 10A TDz, 16A Dz	VDE 0660 T100, EN 60947-1 VDE 0660 T200, EN 60947-5-1
Contact type: 2NC; 2NO (Zb)	Electromagnet:	IEC 60947-5-1
Switching principle: 4 slow make and break contact elements	Duty cycle: 100 % ED	GS-ET 19
Mechanical life: 1×10^6 switch operations	Temperature class: B	
Actuating radius: $R_{min.} = 400mm$	Power consumption: $P_{20} = 5.2W$	Remarks:
Velocity for actuating: $V_{max.} = 1.5m/s$	Operating voltage: 230V AC	The moving protection class (IP-Code) is valid only at closed cover and when using an at least equivalent cable gland.
Mounting according DIN EN 50041 3 screws M5	Safety instructions	
Termination cross section: $1mm^2$ flex.	<ul style="list-style-type: none"> Do not use this safety switch as a mechanical end stop! In case of power interruption the position of rest of the protection apparatus will not be remain. Protection against self-starting should be provided. Four approach directions for actuator are available. Turning the actuator head ($4 \times 90^\circ$) only when the actuator is plugged in. Pre-travel actuator (compensation of shock and vibrations) approx. 9mm. 	
Terminals: 10 screws M3.5		
2 non-fused earthed conductor M4		
Cable entry size: 2 x M20x1.5		
Weight: approx. 0,81 kg		
Protection class (IP-Code): IP67 according to EN 60529; DIN VDE 0470 T1		
Build in location: selectable		
Locking principle: magnetic force		
Unlocking: spring force		
Locking force: 1000 N retaining force in locked position		