

Technical Data

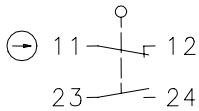
Safety switch

Series SK – with separate actuator

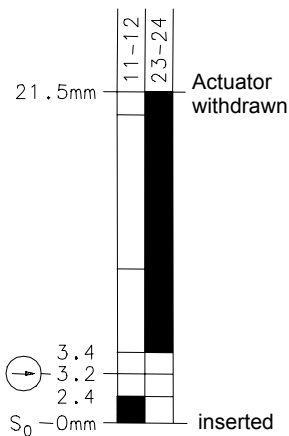
Description **SK-U1Z MRV**

Article number **6016119040**

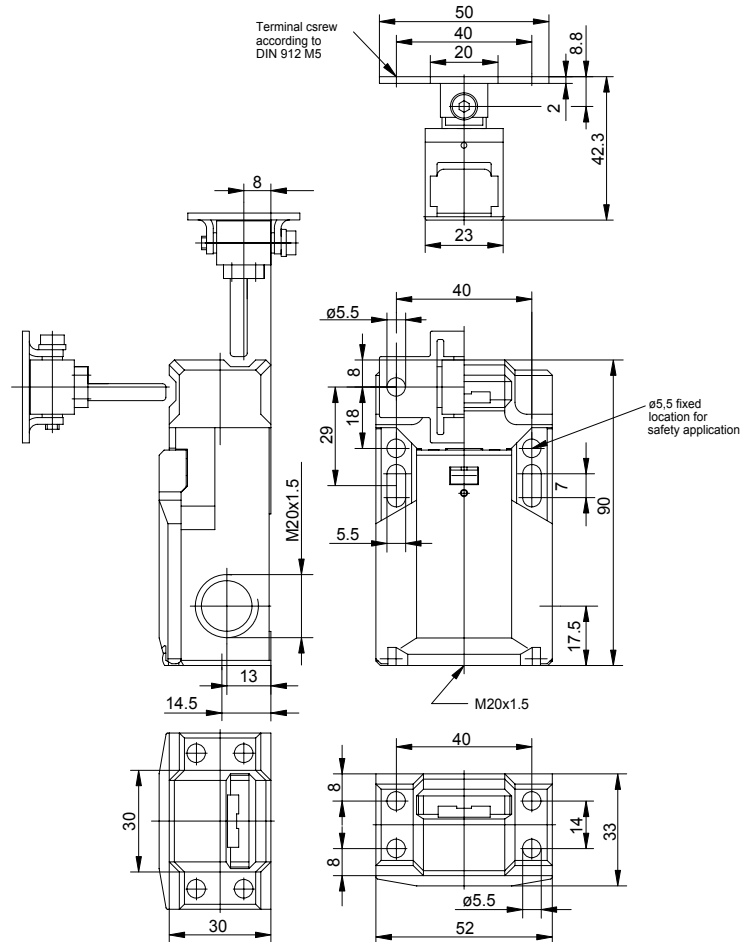
Operating symbol



Operating diagram



ON
 OFF
 Tolerances
 Operating point: $\pm 0,25\text{mm}$;
 Actuating force: $\pm 10\%$



Electrical data

| | | |
|---------------------------------|-----------|--|
| Rated insulation voltage | U_i | 250 VAC |
| Conv. thermal current | I_{the} | 10A |
| Utilization category | | AC-15, U_e / I_e 240V/3A |
| Direct opening action | | according to IEC/EN 60947-5-1, Annex K |
| Short-circuit protective device | | Fuse 10A gL/gG |
| Protection class | | II, totally insulated |

This document will not become the contractual basis; the details included herein do not constitute any descriptions of expected conditions, so that warranties/claims for defects on account of possible variations of the actual qualities from the qualities described herein are explicitly excluded. All rights reserved. Specifications subject to change without notice!

Date of issue: 30.11.2010 / Page 1 of 2
 Document : 6016119040_en / Last update: 1 / 2782-10

Technical Data

Safety switch

Mechanical data

| | |
|--------------------------|--|
| Enclosure | Thermoplastic, glass fibre reinforced (UL94-V0) |
| Cover | Thermoplastic, glass fibre reinforced (UL94-V0) |
| Actuator | Separate actuator G-Stainless steel |
| Extraction force | 10N |
| Ambient air temperature | -30°C ... +80°C |
| Contact type | 1 NC, 1 NO (Zb) |
| Mechanical life | 1 x 10 ⁶ switch operations |
| Switching frequency | ≤ 30 / min. |
| Assembly Safety switch | 2 x M5 |
| Actuator | 2 x M5 |
| Connection | 4 screw connections (M3,5) |
| Conductor cross-sections | Solid: 0,5 ... 1,5mm ² Litz wire with ferrules: 0,5 ... 1,5mm ² |
| Cable entrance | 3 x M20 x 1,5 |
| Weight | ≈ 0,15kg |
| Installation position | Operator definable |
| Protection type | IP65 acc. to IEC/EN 60529 |

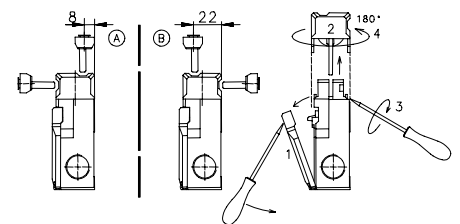
Actuation

Turning the cap (pos A/B) allows 4 different directions of drive.

Cover (1) has to be opened before turning the cap (2).

Insert the screwdriver into the gap between housing and cap and turn until the cap snaps off.

Remove the cap, turn it 180° (4), latch it into the housing and close the cover.



Standards

VDE 0660 T100, DIN EN 60947-1, IEC 60947-1

VDE 0660 T200, DIN EN 60947-5-1, IEC 60947-5-1

EU Conformity



Approvals

TÜV Rheinland, Type Approved
cCSA_{US} A300 (same polarity)

Notes

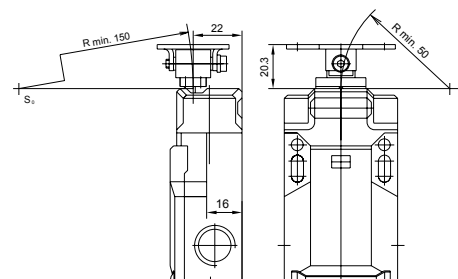
The degree of protection (IP code) specified applies solely to a properly closed cover and the use of an equivalent cable gland with adequate cable.

The switch may not be used as a mechanical stop.

Radial actuation may reduce the mechanical life.

The min. radius refers to a pivot at the top of the cap (S₀).

Tapped holes not in use must be closed with blind plugs.



This document will not become the contractual basis; the details included herein do not constitute any descriptions of expected conditions, so that warranties/claims for defects on account of possible variations of the actual qualities from the qualities described herein are explicitly excluded. All rights reserved. Specifications subject to change without notice!

Date of issue: 30.11.2010 / Page 2 of 2
Document : 6016119040_en / Last update: 1 / 2782-10